

## Chicken antibody to GFR alpha-1: affinity purified

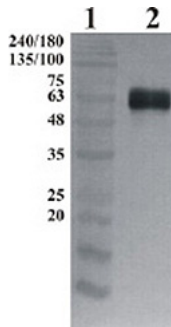
<b>Catalogue No.:</b>	C-1659-100
<b>Description:</b>	Glial cell line-derived neurotrophic factor (GDNF) and neurturin (NTN) are two structurally related, potent neurotrophic factors that play key roles in the control of neuron survival and differentiation. The GFR $\alpha$ -1 is a member of the GDNF receptor family. It is a glycosylphosphatidylinositol (GPI)-linked cell surface receptor for both GDNF and NTN, and mediates activation of the RET tyrosine kinase receptor ( <a href="http://www.ncbi.nlm.nih.gov/gene/2674">www.ncbi.nlm.nih.gov/gene/2674</a> ).
<b>Related products:</b>	C-1660-100 chicken antibody to GFR alpha-2: affinity purified;C-1661-100 chicken antibody to GFR alpha-3: affinity purified;C-1662-100 chicken antibody to GFR alpha-4: affinity purified;
<b>Batch No.:</b>	See product label
<b>Unit size:</b>	100 ug
<b>Antigen:</b>	Recombinant His-tagged human GFR alpha-1 protein produced using CHO-based cell line. For production of hGFR alpha-1, glycosylphosphatidyl-inositol GPI-anchor was removed and protein was secreted to the cell culture supernatant. Protein was purified by Ni-affinity chromatography following gel-filtration from cell culture supernatant.
<b>Sequence:</b>	Uniprot P56159, whole molecule
<b>Antibody Type:</b>	Polyclonal
<b>Isotype:</b>	IgY
<b>Other Names:</b>	RET ligand 1, TGF-beta related neurotrophic factor receptor 1
<b>Accession:</b>	P56159
<b>Produced in:</b>	Chicken
<b>Molecular Weight:</b>	~ 63kDa reducing conditions.
<b>Purity:</b>	Affinity purified
<b>Applications:</b>	WB, ICC. A dilution of 1:5,000 to 1:10,000 is recommended for Western blot and 1:1,000 to 1:2,000 for Immunocytochemistry. Biosensis recommends optimal dilutions/concentrations should be determined by the end user.
<b>Specificity:</b>	Human GFR alpha-1. No cross reaction with hGFR alpha-2, hGFR alpha-3, hGFR alpha-4
<b>Species Against:</b>	Human
<b>Form:</b>	Concentrated ammonium sulphate in PBS pH 7.4 containing no preservatives.
<b>Reconstitution:</b>	Store antibody stock solution at 2-8C upon receipt. DO NOT FREEZE. This product is an (NH <sub>4</sub> ) <sub>2</sub> SO <sub>4</sub> precipitate. To use, mix well by pipetting or vortexing gently prior use, then withdraw the desired amount of antibody stock solution and dilute into your antibody dilution buffer and use normally. Alternatively, material can be centrifuged at 10K x g for 5 minutes and the liquid sulfate solution carefully removed. Then precipitated antibody can be resuspended in 0.1M P, 250mM NaCL, pH 7.4 solution. The solution should then be divided into working aliquots and stored at -80C until used. Prevent multiple freeze thaw cycles of aliquots for best product life.
<b>Storage:</b>	Store at 2-8C upon receipt; DO NOT FREEZE. As product is (NH <sub>4</sub> ) <sub>2</sub> SO <sub>4</sub> (ammonium sulfate) precipitate, mix well by pipetting or vortexing prior to use. See reconstitution instructions for

FOR RESEARCH USE ONLY

## Chicken antibody to GFR alpha-1: affinity purified

more information.

**Expiry Date:** 12 months after purchase



Western-Blot detection of human GFR $\alpha$ -1, using Chicken polyclonal antibody to human GFR $\alpha$ -1. GFR $\alpha$ -1 was C-terminally His tagged. Protein was expressed by CHO cell culture. 100 ng of purified protein was loaded per lane. Line 1. Prestained protein ladder (Naxo 8003). Line 2. hGFR $\alpha$ -1. Primary antibody dilution 1:5000 was used.

biosensis

---

FOR RESEARCH USE ONLY