

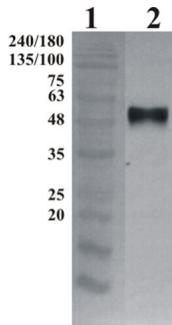
## Chicken antibody to GFR alpha-3: affinity purified

<b>Catalogue No.:</b>	C-1661-100
<b>Description:</b>	The GFR $\alpha$ -3 is a glycosylphosphatidylinositol(GPI)-linked cell surface receptor and a member of the GDNF receptor family. It forms a signaling receptor complex with RET tyrosine kinase receptor and binds the ligand, artemin.
<b>Related products:</b>	R-068-100 Rabbit antibody to GFR alpha-3 (1-11): whole serum;C-1659-100 Chicken antibody to GFR alpha-1: affinity purified;C-1660-100 Chicken antibody to GFR alpha-2: affinity purified;C-1662-100 chicken antibody to GFR alpha-4: affinity purified;
<b>Batch No.:</b>	See product label
<b>Unit size:</b>	100 $\mu$ g
<b>Antigen:</b>	Recombinant His-tagged human GFR $\alpha$ -3 protein produced using CHO-based cell line. For production of hGFR $\alpha$ -3, glycosylphosphatidyl-inositol GPI-anchor was removed and protein was secreted to the cell culture supernatant. Protein was purified by Ni-affinity chromatography following gel-filtration from cell culture supernatant.
<b>Sequence:</b>	Uniprot O60609
<b>Antibody Type:</b>	Polyclonal
<b>Isotype:</b>	IgY
<b>Other Names:</b>	GDNF receptor alpha-3
<b>Accession:</b>	O60609
<b>Produced in:</b>	Chicken
<b>Purity:</b>	Affinity purified
<b>Applications:</b>	WB, ICC. A dilution of 1:5 000 to 1:10 000 is recommended for Western blot and 1:1500 to 1:3000 for immunocytochemistry. Biosensis recommends that optimal dilutions/concentrations should be determined by the end user.
<b>Specificity:</b>	Human GFR $\alpha$ -3. No cross-reactivity with hGFR $\alpha$ -1, hGFR $\alpha$ -2, hGFR $\alpha$ -4.
<b>Species Against:</b>	Human
<b>Form:</b>	Concentrated ammonium sulphate in PBS pH 7.4 contain no preservatives
<b>Reconstitution:</b>	Store antibody stock solution at 2-8C upon receipt. DO NOT FREEZE. This product is an (NH <sub>4</sub> ) <sub>2</sub> SO <sub>4</sub> precipitate. To use, mix well by pipetting or vortexing gently prior use, then withdraw the desired amount of antibody stock solution and dilute into your antibody dilution buffer and use normally. Alternatively, material can be centrifuged at 10K x g for 5 minutes and the liquid sulfate solution carefully removed. Then precipitated antibody can be resuspended in 0.1M P, 250mM NaCL, pH 7.4 solution. The solution should then be divided into working aliquots and stored at -80C until used. Prevent multiple freeze thaw cycles of aliquots for best product life.
<b>Storage:</b>	Store at 2-8C upon receipt; DO NOT FREEZE. As product is (NH <sub>4</sub> ) <sub>2</sub> SO <sub>4</sub> (ammonium sulfate) precipitate, mix well by pipetting or vortexing prior to use. See reconstitution instructions for more information.
<b>Expiry Date:</b>	12 months after purchase.

---

FOR RESEARCH USE ONLY

## Chicken antibody to GFR alpha-3: affinity purified



Western-Blot detection of human GFR $\alpha$ -3, using Chicken polyclonal antibody to human GFR $\alpha$ -3. GFR $\alpha$ -3 was C-terminally His tagged. Protein was expressed by CHO cell culture. 100 ng of purified protein was loaded per lane. Line 1. Prestained protein ladder (Naxo 8003). Line 2. hGFR $\alpha$ -1. Primary antibody dilution 1:5000 was used.

biosensis

---

FOR RESEARCH USE ONLY