

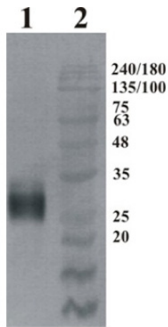
## Chicken antibody to GFR alpha-4: affinity purified

<b>Catalogue No.:</b>	C-1662-100
<b>Description:</b>	GFRa-4 belongs to the GDNF receptor family. It is a glycosyl-phosphatidylinositol (GPI)-linked cell surface receptor for persephin, and mediates activation of the RET tyrosine kinase receptor.
<b>Related products:</b>	C-1659-100 Chicken antibody to GFR alpha-1: affinity purified;C-1660-100 Chicken antibody to GFR alpha-2: affinity purified;C-1661-100 Chicken antibody to GFR alpha-3: affinity purified;
<b>Batch No.:</b>	See product label
<b>Unit size:</b>	100 ug
<b>Antigen:</b>	Recombinant His-tagged human GFRa-4 protein produced using CHO-based cell line. For production of hGFRa-4, glycosylphosphatidyl-inositol GPI-anchor was removed and protein was secreted to the cell culture supernatant. Protein was purified by Ni-affinity chromatography following gel-filtration from cell culture supernatant.
<b>Sequence:</b>	Uniprot Q9GZZ7
<b>Antibody Type:</b>	Polyclonal
<b>Isotype:</b>	IgY
<b>Other Names:</b>	GDNF receptor alpha-4, Persephin receptor
<b>Accession:</b>	Q9GZZ7
<b>Produced in:</b>	Chicken
<b>Purity:</b>	Affinity purified
<b>Applications:</b>	WB, IHC. A dilution of 1:5 000-1:10 000 is recommended for Western blots and 1:1 000 to 1:3 000 for immunocytochemistry. Biosensis recommends optimal dilutions/concentrations should be determined by the end user.
<b>Specificity:</b>	Human GFRa-4. This antibody does not cross-react with hGFRa-1, hGFRa-2, hGFRa-3
<b>Species Against:</b>	Human
<b>Antibody Against:</b>	GFR alpha-4
<b>Form:</b>	Liquid in PBS pH 7.4 containing no preservatives
<b>Reconstitution:</b>	Ready to dilute once thawed
<b>Storage:</b>	Store at -80C upon receipt. Divide antibody into aliquots upon receipt. Avoid multiple freeze-thaw cycles as product degradation may result.
<b>Expiry Date:</b>	12 months after purchase.

---

FOR RESEARCH USE ONLY

## Chicken antibody to GFR alpha-4: affinity purified



Western-Blot detection of human GFR $\alpha$ -4, using Chicken polyclonal antibody to human GFR $\alpha$ -4. GFR $\alpha$ -4 was expressed by CHO cell culture. 100 ng of purified protein was loaded per lane. Line 1. hGFR $\alpha$ -4. Primary antibody dilution 1:5000 was used. Line 2. Prestained protein ladder (Naxo 8003).

biosensis

---

FOR RESEARCH USE ONLY

---