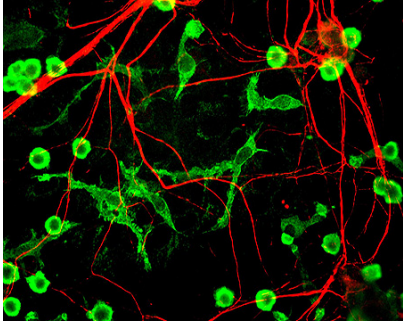


Chicken polyclonal antibody to Internexin alpha

Catalogue No.:	C-1377-50
Description:	Neurofilaments can be defined as the intermediate or 10nm diameter filaments found in neuronal cells. They are composed a mixture of subunits which often includes the neurofilament triplet proteins, NF-L, NF-M and NF-H. Neurofilaments may also include peripherin, alpha-internexin, nestin and in some cases vimentin. Alpha-internexin is a ~66 kDa Class IV intermediate filament subunit expressed in large amounts early in neuronal development, but is downregulated in many neurons as development proceeds. Many classes of mature neurons contain alpha-internexin in addition to NF-L, NF-M and NF-H. In some mature neurons alpha-internexin is the only neurofilament subunit expressed. Antibodies to alpha-internexin are therefore unique probes to study and classify neuronal types and follow their processes in sections and in tissue culture. In addition the very early developmental expression of alpha-internexin means its presence is an early and convenient diagnostic feature of neuronal progenitors cells and other cell committed to the neuronal lineage.
Batch No.:	See product label
Unit size:	50 uL
Antigen:	Recombinant rat alpha-internexin expressed and purified from E. coli
Isotype:	IgY
Other Names:	66 kDa neurofilament protein; NF-66; Neurofilament-66; Alpha-internexin; Alpha-Inx; Neurofilament 5; INA; NEF5;
Accession:	Q16352 AINX_HUMAN; P23565 AINX_RAT;
Produced in:	Chicken
Applications:	Western Blotting (WB), Immunocytochemistry (ICC) and Immunohistochemistry (IHC). A dilution of 1:5,000 - 10,000 is recommended for WB. A dilution of 1:500-1,000 is recommended for ICC and IHC. Biosensis recommends optimal dilutions/concentrations should be determined by the end user.
Specificity:	The specificity of this antibody has been confirmed by WB. This antibody is specific for the 64-66 kDa alpha-internexin protein. Molecular weight will depend on species.
Antibody Against:	Internexin alpha
Cross-reactivity:	Human, Rat, Mouse, Feline. It is predicted to react with other mammals.
Form:	Lyophilised with 5% trehalose
Appearance:	White powder
Reconstitution:	Reconstitute in sterile distilled water. Centrifuge to remove any insoluble material.
Storage:	After reconstitution of lyophilised antibody, aliquot and store at -20C for a higher stability. Avoid freeze-thaw cycles.
Expiry Date:	12 months after purchase

FOR RESEARCH USE ONLY

Chicken polyclonal antibody to Internexin alpha



Mixed neuron glia cultures stain with Chicken polyclonal antibody to Internexin alpha C-1377-50 (red) and counterstained with Rabbit polyclonal antibody to Coronin 1a: Whole serum, R-1335-50 (green) which is an excellent marker of microglia and lymphocytes. This internexin antibody is an excellent marker of neuronal processes in these cultures.

biosensis

FOR RESEARCH USE ONLY