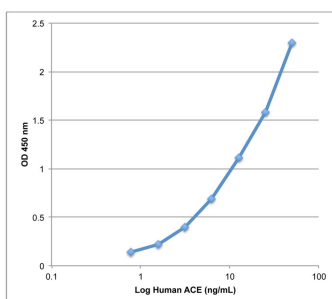


## Human ACE ELISA Kit (2 plates)

|                        |   |
|------------------------|---|
| <b>Catalogue No.:</b>  | BEK-2111-2P   |
| <b>Description:</b>    | The human ACE Kit is a sandwich ELISA. The capture antibody is a monoclonal human ACE antibody pre-coated onto the 96-well strip plates provided in the kit. Human test samples and standards of known ACE concentration are added to these wells and allowed to complex with the bound ACE antibody. A biotinylated goat anti-human ACE polyclonal antibody is then added. This detection antibody binds to the antigen thus completing the sandwich. After washing, an enzyme Avidin-Biotin-Peroxidase complex (ABC) is added which binds to the second antibody. The peroxidase substrate TMB is added to induce a coloured reaction product. The intensity of this coloured product is directly proportional to the concentration of ACE present in the samples. The purpose of this kit is the in-vitro quantitative determination of human ACE in samples such as sera, plasma, tissue lysates and cell culture supernates. This kit has been configured for research use only and is not to be used in diagnostic or clinical procedures. The standard product used in this kit is recombinant human ACE, consisting of 30-1261 amino acids with the molecular mass of 120KDa. |
| <b>Batch No.:</b>      | See product labels  |
| <b>Antigen:</b>        | Angiotensin-converting enzyme (ACE) converts angiotensin I to angiotensin II.   |
| <b>Other Names:</b>    | Angiotensin-converting enzyme; Dipeptidyl carboxypeptidase I; Kininase II; CD143;   |
| <b>Accession:</b>      | P12821 ACE_HUMAN;   |
| <b>Specificity:</b>    | Human ACE   |
| <b>Storage:</b>        | Store at 2-8C   |
| <b>Kit components:</b> | The ELISA kit box contains 2 x 96-well pre-coated strip plates, protein standards, detection reagents, substrate buffer and detailed protocols.   |
| <b>Range:</b>          | 0.78 ng/mL - 50 ng/mL   |
| <b>Sensitivity:</b>    | < 5 pg/ml   |
| <b>Kit protocol:</b>   | Please refer to our online product listing for current protocol/MSDS versions.  |



This standard curve is for demonstration purposes only. A standard curve should be generated for each assay.

---

FOR RESEARCH USE ONLY