

Human Matrix metalloproteinase-9 ELISA Kit (2 plates)

Catalogue No.: BEK-2073-2P

Description: The human Matrix metalloproteinase-9 (MMP-9) Kit is a sandwich ELISA. The capture antibody is a polyclonal human MMP-9 antibody pre-coated onto the 96-well strip plates provided in the kit. Human test samples and standards of known MMP-9 concentration are added to these wells and allowed to complex with the bound MMP-9 antibody. A biotinylated human MMP-9 polyclonal antibody is then added. This detection antibody binds to the antigen thus completing the sandwich. After washing, an enzyme Avidin-Biotin-Peroxidase complex (ABC) is added which binds to the second antibody. The peroxidase substrate TMB is added to induce a coloured reaction product. The intensity of this coloured product is directly proportional to the concentration of MMP-9 present in the samples. The purpose of this kit is the in-vitro quantitative determination of human MMP-9 in samples such as sera, plasma, and cell culture supernates. This kit has been configured for research use only and is not to be used in diagnostic or clinical procedures.

Batch No.: See product labels

Other Names: MMP-9; MMP9; Matrix metalloproteinase-9; 92 kDa gelatinase; 92 kDa type IV collagenase; Gelatinase B; GELB; CLG4B;

Accession: P14780 MMP9_HUMAN;

Specificity: Detects human pro and active MMP-9 and MMP-9 bound to TIMP.

Cross-reactivity: Human; does not react with rat or mouse MMP-9

Storage: Store at 2-8C

Kit components: The ELISA kit box contains 2 x 96-well pre-coated strip plates, protein standards, detection reagents, substrate buffer and detailed protocols.

Range: 156 pg/mL - 10,000 pg/mL

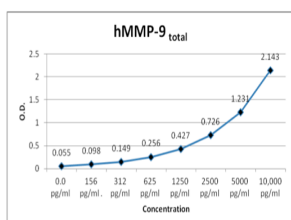
Sensitivity: < 5 pg/ml

Kit protocol: Please refer to our online product listing for current protocol/MSDS versions.

IX: Typical Standard Curve (for reference only, not to be used for actual data)

Concentration pg/ml	0.0 pg/ml	156 pg/ml	312 pg/ml	625 pg/ml	1250 pg/ml	2500 pg/ml	5000 pg/ml	10,000 pg/ml
O.D.	0.055	0.098	0.149	0.256	0.427	0.726	1.231	2.143

This standard curve is for demonstration purposes only. A standard curve should be generated for each assay.



FOR RESEARCH USE ONLY