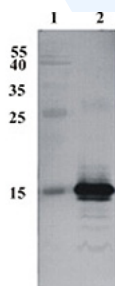


Mouse antibody to human CDNF (conserved dopamine neurotrophic factor) [6G5]: IgG

Catalogue No.:	M-1676-100
Description:	CDNF (conserved dopamine neurotrophic factor) is a trophic factor for midbrain dopamine neurons in vivo. It prevents the 6-OHDA- (Lindholm et al. 20007; Voutilainen et al., 2011) and MPTP-induced degeneration (Airavaara et al., 2012) of dopamine neurons in rodent models of Parkinson's disease. When administered after 6-OHDA or MPTP -lesioning it restores the dopaminergic function and prevents degeneration of dopamine neurons in substantia nigra pars compacta.
Batch No.:	See product label
Unit size:	100 ug
Antigen:	Recombinant human CDNF protein produced using CHO-based cell line. Purified from cell culture supernatant.
Antibody Type:	Monoclonal
Isotype:	IgG1
Other Names:	ARMETL1
Produced in:	Mouse
Purity:	Purified by protein G affinity chromatography
Applications:	Western blot (WB) at a suggested dilution of 1:2,000 - 1:4,000. Biosensis recommends optimal dilutions/concentrations should be determined by the end user.
Specificity:	CDNF (conserved dopamine neurotrophic factor)
Species Against:	Human
Form:	PBS pH 7.4, with 0.1% sodium azide.
Storage:	Store at -20C or -70C upon receipt. After opening maintain undiluted in smaller aliquots at -20C or -70 C for up to 6 months. Avoid multiple freeze-thaw cycles.
Expiry Date:	Unopened, 12 months after purchase.



Western Blot testing of anti-CDNF antibody. Line 1. PageRuler Prestained Protein Ladder (#SM0671 Fermentas); Line 2. Recombinant CDNF expressed into the supernatant of CHO cell culture medium.

FOR RESEARCH USE ONLY