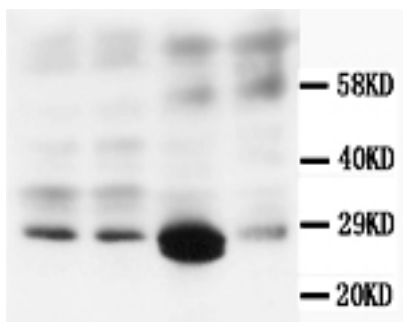


Mouse monoclonal antibody to Calbindin-D [CB-D7]: IgG

Catalogue No.:	M-976-100
Description:	Calbindin-D is a highly conserved 28 kDa protein that belongs to a family of low molecular weight calcium-binding proteins (CaBPs). Calbindin-D has 4 active calcium binding domains. It plays a role in the regulation of calcium and calcium related signalling in neurons and during embryo development. This antibody binds only to calbindin-D-28K and not with other family members such as calretinin and calbindin-D-9K.
Batch No.:	See product label
Unit size:	100 ug
Antigen:	Bovine kidney Calbindin-D
Clone:	CB-D7
Other Names:	CALB1_BOVIN; CALB1;
Accession:	P04467 CALB1_BOVIN
Produced in:	Mouse
Purity:	IgG1
Applications:	Immunohistochemistry (IHC) and Western Blotting (WB). A concentration of 0.5-1.0 ug/mL is recommended for WB. Bovine Calbindin-D has a predicted length of 261 residues and a MW of 28 kDa. A concentration of 1.0-2.0 ug/mL is recommended to detect Calbindin-D in formalin fixed and paraffin embedded tissues. Biosensis recommends optimal dilutions/concentrations should be determined by the end user.
Specificity:	The specificity of this antibody has been confirmed by WB and IHC against the antigen.
Species Against:	The antibody works on rat and is expected to work on human, mouse and bovine.
Form:	Lyophilized from 1.2% sodium acetate, 2mg BSA, 0.01mg NaN ₃
Reconstitution:	Reconstitute in 1 mL of PBS (pH 7.4) to achieve an antibody concentration of 100 ug/mL. Centrifuge to remove any insoluble material.
Storage:	At least 12 months after purchase at 2-8C (lyophilized formulations). After reconstitution, aliquot and store at -20C for a higher stability. Avoid freeze-thaw cycles.
Expiry Date:	12 months after purchase.



Western blot of mouse monoclonal antibody to Calbindin-D (M-976-100) using rat brain lysate (lanes 1 and 2), rat kidney lysate (lane 3) and rat lung tissue lysate (lane 4) at a concentration of 0.5 ug/ml. Secondary antibody HRP conjugated goat anti-mouse IgG at 1:3,000-10,000.

FOR RESEARCH USE ONLY