

## Mouse monoclonal antibody to Glial Fibrillary Acidic Protein (GFAP) [5C10]: IgG

<b>Catalogue No.:</b>	M-1375-100
<b>Description:</b>	GFAP is a 50 kDa intra-cytoplasmic filamentous protein of the cytoskeleton in astrocytes. During the development of the central nervous system, it is a cell-specific marker that distinguishes astrocytes from other glial cells. GFAP immunoreactivity has been shown in immature oligodendrocytes, epiglottic cartilage, pituicytes, papillary meningiomas, myoepithelial cells of the breast and in non-CNS: Schwann cells, salivary gland neoplasms, enteric glia cells, and metastasizing renal carcinomas.
<b>Batch No.:</b>	See product label
<b>Unit size:</b>	100 uL
<b>Antigen:</b>	Purified GFAP from porcine spinal cord
<b>Antibody Type:</b>	Monoclonal
<b>Isotype:</b>	IgG1
<b>Clone:</b>	5C10
<b>Other Names:</b>	Astrocyte; Glial fibrillary acidic protein; GFAP;
<b>Accession:</b>	P14136 GFAP_HUMAN; Q8WP16 Q8WP16_PIG;
<b>Produced in:</b>	Mouse
<b>Applications:</b>	Western Blotting (WB), Immunocytochemistry (ICC) and Immunohistochemistry (IHC). A dilution of 1:5,000 is recommended for WB. Human GFAP has a predicted length of 432 residues and a MW of 50 kDa. A dilution of 1:500-1:1,000 is recommended for ICC/IHC. This antibody works well on frozen sections, cells in tissue culture and on formalin fixed histological sections. Biosensis recommends optimal dilutions/concentrations should be determined by the end user.
<b>Specificity:</b>	The specificity of this antibody has been confirmed by WB.
<b>Antibody Against:</b>	Glial Fibrillary Acidic Protein
<b>Cross-reactivity:</b>	Human, Rat, Mouse, Bovine, Porcine. Predicted to react with other mammalian and avian species.
<b>Form:</b>	Lyophilised from PBS, pH 7.4, containing 3% trehalose and 0.05% sodium azide.
<b>Reconstitution:</b>	Reconstitute in 100 uL sterile distilled water to obtain an antibody stock concentration of 1 mg/mL. Centrifuge to remove any insoluble material.
<b>Storage:</b>	After reconstitution of lyophilised antibody, aliquot and store at -20C for a higher stability. Avoid freeze-thaw cycles.
<b>Expiry Date:</b>	12 months after purchase if unopened
<b>Specific References:</b>	Kawabe K et al. (2017) Transglutaminases Derived from Astrocytes Accelerate Amyloid $\beta$ Aggregation. <i>Neurochem Res.</i> [Epub ahead of print]. Application: ICC (cultured rat astrocytes).  Nagai T et al. (2017) Development of an in situ evaluation system for neural cells using

---

FOR RESEARCH USE ONLY

## Mouse monoclonal antibody to Glial Fibrillary Acidic Protein (GFAP) [5C10]: IgG

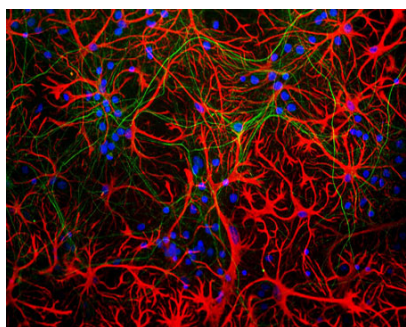
extracellular matrix-modeled gel culture. J Biosci Bioeng. 124(4):430-8. Application: IF (artificial gel matrix).

Kawabe T et al. (2017) Microglia Endocytose Amyloid  $\beta$  Through the Binding of Transglutaminase 2 and Milk Fat Globule EGF Factor 8 Protein. Neurochem Res. [Epub ahead of print] Application: ICC (cultured astrocytes).

Takano K et al. (2017) Inhibition of Gap Junction Elevates Glutamate Uptake in Cultured Astrocytes. Neurochem Res. [Epub ahead of print] Application: ICC (cultured astrocytes).

### References:

1. Reeves S.A, et al. Proc. Natl. Acad. Sci. U.S.A. 86:5178-5182(1989).
2. Brenner M, et al. Brain Res. Mol. Brain Res. 7:277-286(1990).
2. Isaacs A, et al. Genomics 51:152-154(1998).
3. Ota T, et al. Nat. Genet. 36:40-45(2004).
4. Nielsen A.L, et al. J. Biol. Chem. 277:29983-29991(2002).
5. Singh R, et al. Genomics 82:185-193(2003).
6. Brenner M, et al. Nat. Genet. 27:117-120(2001).
7. Brockmann K, et al. Eur. Neurol. 50:100-105(2003).
8. Stumpf E, et al. Arch. Neurol. 60:1307-1312(2003).
9. Sawaishi Y, et al. Neurology 58:1541-1543(2002).
10. Aoki Y, et al. Neurosci. Lett. 312:71-74(2001).



Mixed neuron-glia cultures stained with Mouse monoclonal antibody to Glial Fibrillary Acidic Protein [5C10] M-1375-100 (red) and chicken polyclonal antibody to neurofilament L C-1390-50 (green). The GFAP antibody stains the network of astrocytes in these cultures, while the NF-L antibody stains neurons and their processes. The blue channel shows the localization of DNA.

---

FOR RESEARCH USE ONLY