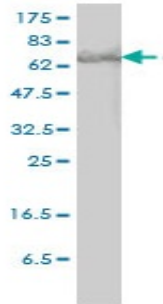


Mouse monoclonal antibody to human Acute-phase response factor [1D11]: IgG

Catalogue No.:	M-870-100
Description:	Acute-phase response factor is a transcription factor that binds to the IL-6-responsive elements identified in the promoters of various acute-phase protein genes. This protein is activated through phosphorylation in response to various cytokines and growth factors including IFNs, EGF, IL5, IL6, HGF, LIF and BMP2. Once phosphorylated, the protein is translocated into the nucleus. It forms a homodimer or a heterodimer with a related family member (STAT1). It is expressed in heart, brain, placenta, lung, liver, skeletal muscle, kidney and pancreas. Defects in Acute-phase response factor are the cause of hyperimmunoglobulin E recurrent infection syndrome autosomal dominant (AD-HIES). This disorder is characterised by immunodeficiency, chronic eczema, recurrent Staphylococcal infections, increased serum IgE, eosinophilia, distinctive coarse facial appearance, abnormal dentition, hyperextensibility of the joints, and bone fractures.
Batch No.:	See product label
Unit size:	100 ug
Antigen:	Recombinant human Acute-phase response factor with GST tag.
Clone:	1D11
Other Names:	Signal transducer and activator of transcription 3; STAT3; APRF
Accession:	STAT3_HUMAN
Produced in:	Mouse
Purity:	Protein G purified immunoglobulin
Applications:	This antibody is recommended for WB and ELISA. Biosensis recommends optimal dilutions/concentrations should be determined by the end user.
Specificity:	Specificity has been confirmed by WB and direct ELISA against the antigen.
Cross-reactivity:	Human. Other species have not been tested.
Form:	Lyophilised from PBS pH 7.2
Reconstitution:	Reconstitute in 100 uL of sterile water. Centrifuge to remove any insoluble material.
Storage:	After reconstitution keep aliquots at -20C for higher stability. Glycerol (1:1) may be added for additional stability. Avoid repetitive freeze/thaw cycles.
Expiry Date:	12 months after purchase

FOR RESEARCH USE ONLY

Mouse monoclonal antibody to human Acute-phase response factor [1D11]: IgG



Western blot detection of human Acute-phase response factor in HeLa cell lysate.

biosensis

FOR RESEARCH USE ONLY