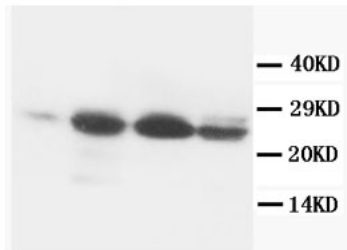


Mouse monoclonal antibody to human Bcl-2 (41-54) [BL-2]: IgG

Catalogue No.:	M-968-100
Description:	Apoptosis regulator Bcl-2 is an integral outer mitochondrial membrane protein that blocks the apoptotic death of some cells such as lymphocytes. At least 2 isoforms (alpha and beta) are produced by alternate splicing with different C-terminal ends.
Batch No.:	See product label.
Unit size:	100 ug
Antigen:	Synthetic peptide (GAAPAPGIFSSQPG) corresponding to amino acids 41-54 from human Bcl-2 conjugated to thyroglobin.
Clone:	BL-2
Other Names:	BCL2;
Accession:	P10415 BCL2_HUMAN
Produced in:	Mouse
Purity:	IgG
Applications:	Immunohistochemistry (IHC) and Western Blotting (WB). A concentration of 1.0-2.0 ug/mL is recommended for WB. Human Bcl-2 has a predicted length of 239 aa and MW of 26 kDa. A concentration of 0.4-1.0 ug/mL is recommended to detect Bcl-2 in formalin fixed and paraffin embedded tissues as well as formalin/acetone frozen tissues. Biosensis recommends optimal dilutions/concentrations should be determined by the end user.
Specificity:	The specificity of this antibody has been confirmed by WB and IHC against the antigen. Human breast cancer cell line MCF-7, Hela cells, normal and reactive lymphoid tissues were used to test the specificity of this antibody.
Cross-reactivity:	Human; Rat;
Form:	Lyophilized from 1.2% sodium acetate, 2mg BSA, 0.01mg NaN3
Reconstitution:	Reconstitute in 1 mL of PBS (pH 7.4) to achieve an antibody concentration of 100 ug/mL. Centrifuge to remove any insoluble material.
Storage:	At least 12 months after purchase at 2-8C (lyophilized formulations). After reconstitution, aliquot and store at -20C for a higher stability. Avoid freeze-thaw cycles.
Expiry Date:	12 months after purchase.

FOR RESEARCH USE ONLY

Mouse monoclonal antibody to human Bcl-2 (41-54) [BL-2]: IgG



Western Blot analysis using mouse monoclonal antibody to human Bcl-2 (M-968-100): Lane 1: Rat heart tissue lysate Lane 2: Rat spleen muscle tissue lysate Lane 3: Rat small intestine tissue lysate Lane 4: Rat liver tissue lysate

biosensis

FOR RESEARCH USE ONLY