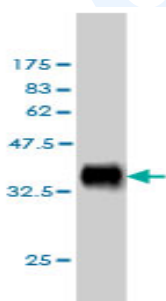


Mouse monoclonal antibody to human Delta 1 [4F8]: IgG

Catalogue No.:	M-823-100
Description:	Delta-1 acts as a ligand for Notch receptors. It blocks the differentiation of progenitor cells into the B-cell lineage while promoting cells with the characteristics of a T-cell/NK-cell precursor. It is expressed in heart and pancreas, with lower expression in brain and muscle and very little expression in placenta, lung, liver and kidney. Delta-1 is a transmembrane protein which is ubiquitinated by MIB, leading to its endocytosis and subsequent degradation. It contains one DSL domain and eight EGF-like domains.
Batch No.:	See product label
Unit size:	100 ug
Antigen:	Partial recombinant protein of human Delta-1 (amino acids 18 to 109) with a GST tag.
Clone:	4F8
Other Names:	Delta-like protein 1; Drosophila Delta homolog 1; H-Delta-1; DLL1
Accession:	DLL1_HUMAN
Produced in:	Mouse
Purity:	Protein G purified immunoglobulin
Applications:	This antibody is recommended for WB and sandwich ELISA. Biosensis recommends optimal dilutions/concentrations should be determined by the end user.
Specificity:	The specificity of this antibody has been confirmed by WB and ELISA against the antigen.
Cross-reactivity:	Other species have not been tested.
Form:	Lyophilised from PBS pH 7.4
Reconstitution:	Reconstitute in 100 uL of sterile water. Centrifuge to remove any insoluble material.
Storage:	After reconstitution keep aliquots at -20C for higher stability or at 2-8C with an appropriate antibacterial agent. Glycerol (1:1) may be added for additional stability. Avoid repetitive freeze/thaw cycles.
Expiry Date:	12 months after purchase



WB detection of GST tagged recombinant Delta-1 using mouse monoclonal antibody to human Delta-1 [4F8], catalogue number M-823-100. The GST tag has a molecular weight of 26kDa.

FOR RESEARCH USE ONLY