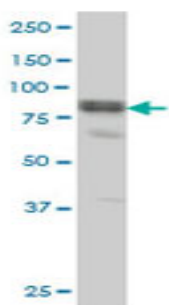


## Mouse monoclonal antibody to human DSH homolog 3 [4H2]: IgG

<b>Catalogue No.:</b>	M-828-50
<b>Description:</b>	DSH-homolog 3 may play a role in the signal transduction pathway mediated by multiple Wnt genes. It is a cytoplasmic protein that belongs to the DSH family. It contains a DEP domain, a DIX domain and a PDZ (DHR) domain. It interacts through its PDZ domain with the C-terminal regions of VANGL1 and VANGL2. The unprocessed precursor has a length of 716 amino acids and an estimated molecular weight of 78kDa.
<b>Batch No.:</b>	See product label
<b>Unit size:</b>	50 ug
<b>Antigen:</b>	Partial recombinant protein of human DSH homolog 3 (aa 1 to 99) with a GST tag.
<b>Clone:</b>	4H2
<b>Other Names:</b>	Segment polarity protein dishevelled homolog DVL-3; Dishevelled-3; DVL3
<b>Accession:</b>	DVL3_HUMAN
<b>Produced in:</b>	Mouse
<b>Purity:</b>	Protein G purified immunoglobulin
<b>Applications:</b>	This antibody is recommended for WB and sandwich ELISA. Biosensis recommends optimal dilutions/concentrations should be determined by the end user.
<b>Specificity:</b>	Specificity has been confirmed by WB and direct ELISA against the antigen.
<b>Cross-reactivity:</b>	Other species have not been tested.
<b>Form:</b>	Lyophilised from PBS pH 7.2
<b>Reconstitution:</b>	Reconstitute in 50 uL of sterile water. Centrifuge to remove any insoluble material.
<b>Storage:</b>	After reconstitution keep aliquots at -20C for higher stability or at 2-8C with an appropriate antibacterial agent. Glycerol (1:1) may be added for additional stability. Avoid repetitive freeze/thaw cycles.
<b>Expiry Date:</b>	12 months after purchase



Western blot analysis on human epidermoid carcinoma lysate using mouse monoclonal antibody to DSH homolog 3, catalogue number M-828-50.

FOR RESEARCH USE ONLY