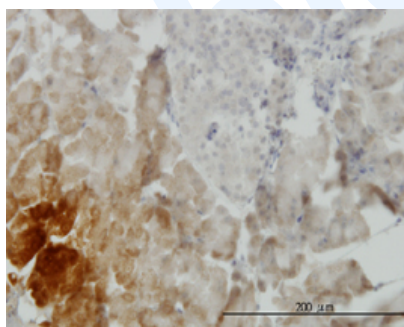


Mouse monoclonal antibody to human GDF-11 [3G6]: IgG

Catalogue No.:	M-885-100
Description:	GDF-11 is a secreted signal that acts globally to specify positional identity along the anterior/posterior axis during development. It plays critical roles in patterning both mesodermal and neural tissues and in establishing the skeletal pattern. It exists as a disulfide-linked homodimer. It belongs to the TGF-beta family.
Batch No.:	See product label
Unit size:	100 ug
Antigen:	Partial recombinant human GDF-11 (310-407) with a GST tag.
Clone:	3G6
Other Names:	Growth/differentiation factor 11; Bone morphogenetic protein 11; GDF11; BMP11
Accession:	GDF11_HUMAN
Produced in:	Mouse
Purity:	Protein G purified immunoglobulin
Applications:	This antibody is recommended for IHC, and sandwich ELISA. Biosensis recommends optimal dilutions/concentrations should be determined by the end user.
Specificity:	Specificity has been confirmed by direct ELISA against the antigen.
Cross-reactivity:	Human. Other species have not been tested.
Form:	Lyophilised from PBS pH 7.2
Reconstitution:	Reconstitute in 100 uL of sterile water. Centrifuge to remove any insoluble material.
Storage:	After reconstitution keep aliquots at -20C for higher stability or at 2-8C with an appropriate antibacterial agent. Glycerol (1:1) may be added for additional stability. Avoid repetitive freeze/thaw cycles.
Expiry Date:	12 months after purchase



Immunohistochemical detection of GDF-11 on formalin fixed, paraffin-embedded, human pancreas. Anti-GDF-11 primary antibody, catalogue number M-885-100, was used at a concentration of 3 µg/ml. Image 2:

FOR RESEARCH USE ONLY