

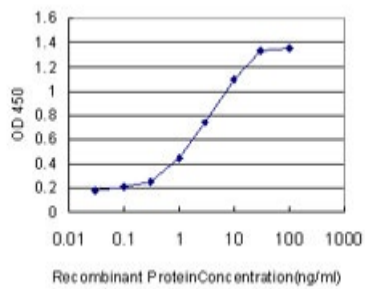
## Mouse monoclonal antibody to human homeobox protein DLX-5 [1B3]: IgG

<b>Catalogue No.:</b>	M-825-100
<b>Description:</b>	Homeobox protein DLX-5 belongs to the the distal-less homeobox family. It contains one homeobox DNA-binding domain and is thought to play a role in bone development and fracture healing. It is first expressed at 8.5 to 9 days in facial and branchial arch mesenchyme, otic vesicles and frontonasal ectoderm around olfactory placodes. At day 9.5-10, expression is seen in the developing forebrain. In day 12.5 embryos it is expressed in the brain and bones and also in all skeletal structures of mid gestation embryos after the first cartilage formation. Expression remains unaltered in both brain and skeleton in day 15 embryos and slowly decreases in day 17 embryos. The unprocessed precursor has a length of 289 amino acids and a predicted molecular weight of 31.5 kDa.
<b>Batch No.:</b>	See product label
<b>Unit size:</b>	100 ug
<b>Antigen:</b>	Partial recombinant protein of human homeobox protein DLX-5 (amino acids 1 to 110) with a GST tag.
<b>Clone:</b>	1B3
<b>Other Names:</b>	DLX5
<b>Accession:</b>	DLX5_HUMAN
<b>Produced in:</b>	Mouse
<b>Purity:</b>	Protein G purified immunoglobulin
<b>Applications:</b>	This antibody is recommended for direct and sandwich ELISA. Biosensis recommends optimal dilutions/concentrations should be determined by the end user.
<b>Specificity:</b>	The specificity of this antibody was confirmed by direct ELISA against the antigen.
<b>Cross-reactivity:</b>	No other species have been tested.
<b>Form:</b>	Lyophilised from PBS pH 7.2
<b>Reconstitution:</b>	Reconstitute in 100 uL of sterile water. Centrifuge to remove any insoluble material.
<b>Storage:</b>	After reconstitution keep aliquots at -20C for higher stability. Glycerol (1:1) may be added for additional stability. Avoid repetitive freeze/thaw cycles.
<b>Expiry Date:</b>	12 months after purchase

---

FOR RESEARCH USE ONLY

## Mouse monoclonal antibody to human homeobox protein DLX-5 [1B3]: IgG



Sandwich ELISA using mouse monoclonal antibody to human homeobox protein DLX-5 [1B3], catalogue number M-825-100, as a capture antibody. The detection limit for recombinant GST tagged homeobox protein DLX-5 is 0.3ng/ml.

biosensis

---

FOR RESEARCH USE ONLY