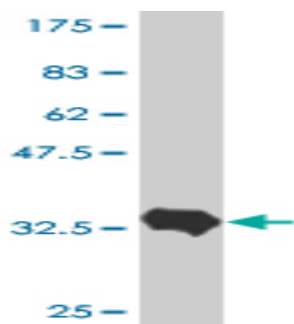


## Mouse Monoclonal antibody to human JAG1 [1E12]

<b>Catalogue No.:</b>	M-800-200
<b>Description:</b>	The jagged 1 protein encoded by JAG1 is the human homolog of the Drosophila jagged protein. Human jagged 1 is the ligand for multiple Notch receptors involved in the mediation of Notch signalling. It may be involved in cell-fate decision during hematopoiesis and seems to be involved in early and late stages of mammalian cardiovascular development. JAG1 is a trans membrane protein that is widely expressed in adult and fetal tissues. Mutations that alter the jagged 1 protein cause Alagille syndrome which is an autosomal dominant multisystem disorder. Defects in JAG1 are also the cause of tetralogy of Fallot (TOF) which is a congenital heart anomaly.
<b>Batch No.:</b>	See product label
<b>Unit size:</b>	200 uL
<b>Antigen:</b>	Partial recombinant human JAG1 (amino acids 531-621) with a GST tag
<b>Clone:</b>	[1E12]
<b>Other Names:</b>	Protein jagged-1; Jagged 1; hJ1; CD339 antigen; JAG1; JAGL1;
<b>Accession:</b>	JAG1_HUMAN
<b>Produced in:</b>	Mouse
<b>Purity:</b>	Ascites fluid
<b>Applications:</b>	This antibody is recommended for direct ELISA and WB. Biosensis recommends optimal dilutions/concentrations should be determined by the end user.
<b>Specificity:</b>	Specificity was demonstrated by WB against the antigen.
<b>Cross-reactivity:</b>	Human. Other species not yet tested.
<b>Form:</b>	Lyophilised
<b>Reconstitution:</b>	Reconstitute in 200 uL of sterile water. Centrifuge to remove any insoluble material.
<b>Storage:</b>	After reconstitution keep aliquots at -20C for higher stability or at 2-8C with an appropriate antibacterial agent. Glycerol (1:1) may be added for additional stability. Avoid repetitive freeze/thaw cycles.
<b>Expiry Date:</b>	12 months after purchase



Monoclonal antibody to human JAG1 [1E12], catalogue number M-800-200, detects a band of 35kDa when used for WB detection against the antigen (partial recombinant human JAG1 with the GST tag). Note the GST tag alone has a molecular weight of 26 KDa.

FOR RESEARCH USE ONLY