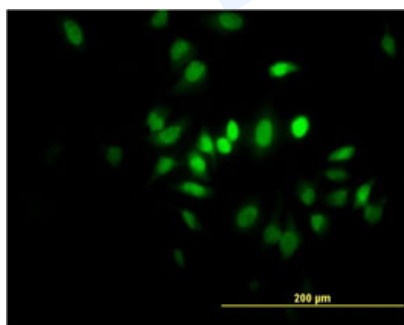


## Mouse monoclonal antibody to human Musashi 1 [3G1]: IgG

<b>Catalogue No.:</b>	M-846-100
<b>Description:</b>	Musashi 1 is an RNA binding protein that regulates the expression of target mRNAs at the translational level. It contains two conserved tandem RNA recognition motifs. Musashi 1 binds RNA containing the sequence 5'-GUUAGUUAGUUAGUU-3' and other sequences containing the pattern 5'-[GA]U(1-3)AGU-3'. It may play a role in the proliferation and maintenance of stem cells in the central nervous system. It is detected in fetal kidney, brain, liver and lung and adult brain and pancreas. It is also detected in hepatoma cell lines.
<b>Batch No.:</b>	See product label
<b>Unit size:</b>	100 µg
<b>Antigen:</b>	Partial recombinant human Musashi 1 protein (1-87) with a GST tag.
<b>Clone:</b>	3G1
<b>Other Names:</b>	RNA-binding protein Musashi homolog 1; Musashi1; MSI1
<b>Accession:</b>	MSI1H_HUMAN
<b>Produced in:</b>	Mouse
<b>Purity:</b>	Protein G purified immunoglobulin
<b>Applications:</b>	This antibody is recommended for WB, IHC, sandwich ELISA and immunofluorescence. The recommended dilution for this antibody is 3 µg/ml for IHC and 10 µg/ml for immunofluorescence. Biosensis recommends optimal dilutions/concentrations should be determined by the end user.
<b>Specificity:</b>	Specificity has been confirmed by WB and direct ELISA against the antigen.
<b>Cross-reactivity:</b>	This antibody cross reacts with human, mouse and rat Musashi 1 protein.
<b>Form:</b>	Lyophilised from PBS pH 7.2
<b>Reconstitution:</b>	Reconstitute in 100 µl of sterile water. Centrifuge to remove any insoluble material.
<b>Storage:</b>	After reconstitution keep aliquots at -20°C for higher stability. Glycerol (1:1) may be added for additional stability. Avoid repetitive freeze/thaw cycles.
<b>Expiry Date:</b>	12 months after purchase



Immunofluorescent detection of Musashi 1 expression in HeLa cells. The anti-musashi 1 primary antibody, catalogue number M-846-100, was used at a concentration of 10 µg/ml.

---

FOR RESEARCH USE ONLY