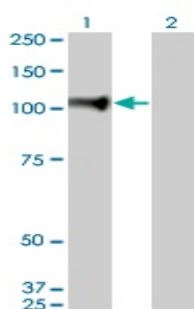


Mouse monoclonal antibody to human NEL-like protein 1 [6A8]: IgG

| | |
|--------------------------|---|
| Catalogue No.: | M-849-100 |
| Description: | NEL-like protein 1 is a secreted protein that contains 6 epidermal growth factor (EGF)-like domains. The homotrimer may be involved in the control of cell growth and differentiation. NEL-like protein 1 is expressed in craniofacial anomalies. |
| Batch No.: | See product label |
| Unit size: | 100 ug |
| Antigen: | Partial recombinant human NEL-like protein 1 (304-404) with a GST tag. |
| Clone: | 6A8 |
| Other Names: | Protein kinase C-binding protein NELL1; Nel-related protein 1; NELL1; NRP1 |
| Accession: | NELL1_HUMAN |
| Produced in: | Mouse |
| Purity: | Protein G purified immunoglobulin |
| Applications: | This antibody is recommended for WB and sandwich ELISA. Biosensis recommends optimal dilutions/concentrations should be determined by the end user. |
| Specificity: | Specificity has been confirmed by WB and direct ELISA against the antigen. |
| Cross-reactivity: | Human. Other species have not been tested. |
| Form: | Lyophilised from PBS pH 7.2 |
| Reconstitution: | Reconstitute in 100 uL of sterile water. Centrifuge to remove any insoluble material. |
| Storage: | After reconstitution keep aliquots at -20C for higher stability or at 2-8C with an appropriate antibacterial agent. Glycerol (1:1) may be added for additional stability. Avoid repetitive freeze/thaw cycles. |
| Expiry Date: | 12 months after purchase |



Western blot detection of NEL-like protein 1 expression in transfected 293T cell lysate. Lane 1: NEL-like protein 1 transfected 293T lysate. Lane 2: Non-transfected 293T lysate.

FOR RESEARCH USE ONLY