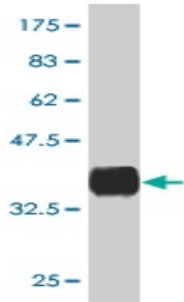


Mouse monoclonal antibody to human Neuropeptide Y [3B5]: IgG

Catalogue No.:	M-852-100
Description:	Neuropeptide Y is a 36 amino acid neurotransmitter found in the brain and autonomic nervous system. It has been associated with numerous physiologic processes in the brain, including the regulation of energy balance, memory and learning, and epilepsy. The main effect is increased food intake and decreased physical activity. It is also implicated in the secretion of gonadotrophin-release hormone. It is secreted by the hypothalamus and it is one of the most abundant peptides in the nervous system. It is also found in some chromaffin cells of the adrenal medulla.
Batch No.:	See product label
Unit size:	100 ug
Antigen:	Partial recombinant human Neuropeptide Y (29-97: NB. Includes both the NPY peptide and the C-flanking peptide of NPY) with a GST tag.
Isotype:	IgG1 Kappa
Clone:	3B5
Other Names:	NPY
Accession:	NPY_HUMAN
Produced in:	Mouse
Purity:	Protein G purified immunoglobulin
Applications:	This antibody is recommended for WB and sandwich ELISA. Biosensis recommends optimal dilutions/concentrations should be determined by the end user.
Specificity:	Specificity has been confirmed by WB and direct ELISA against the antigen.
Cross-reactivity:	Human. Other species have not been tested.
Form:	Lyophilised from PBS pH 7.4
Reconstitution:	Reconstitute in 100 uL of sterile water. Centrifuge to remove any insoluble material.
Storage:	Store lyophilized antibody at 2-8C. After reconstitution keep aliquots at -20C for higher stability or at 2-8C with an appropriate antibacterial agent. Glycerol (1:1) may be added for additional stability. Avoid repetitive freeze/thaw cycles.
Expiry Date:	12 months after purchase

FOR RESEARCH USE ONLY

Mouse monoclonal antibody to human Neuropeptide Y [3B5]: IgG



Western blot detection of recombinant GST tagged human Neuropeptide Y. Note the molecular weight of the GST tag alone is 26 kDa.

biosensis

FOR RESEARCH USE ONLY