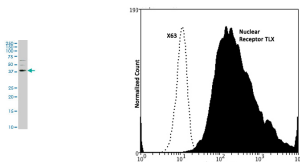


Mouse monoclonal antibody to human Nuclear receptor TLX [1C4]: IgG

Catalogue No.:	M-920-100
Description:	Nuclear receptor TLX is an orphan receptor that binds DNA as a monomer and shares a target gene specificity that is unique among the nuclear receptor superfamily. It is thought to be required for brain development and also involved in the regulation of retinal development. It is a brain-specific protein that is present in all brain section tested with highest levels in the caudate nucleus and hippocampus.
Batch No.:	See product label
Unit size:	100 ug
Antigen:	Partial recombinant human Nuclear receptor TLX [248-342] with a GST tag.
Clone:	1C4
Other Names:	Nuclear receptor subfamily 2 group E member 1; Protein tailless homolog; TII; hTII; NR2E1; TLX
Accession:	NR2E1_HUMAN
Produced in:	Mouse
Purity:	Protein G purified immunoglobulin
Applications:	This antibody is recommended for WB, ELISA and Flow Cytometry (~2 ug per 10 ⁶ cells). Biosensis recommends optimal dilutions/concentrations should be determined by the end user.
Specificity:	Specificity has been confirmed by direct ELISA against the antigen.
Cross-reactivity:	Human, mouse and rat. Other species have not been tested.
Form:	Lyophilised from PBS pH 7.2
Reconstitution:	Reconstitute in 100 uL of sterile water. Centrifuge to remove any insoluble material.
Storage:	After reconstitution keep aliquots at -20C for higher stability or at 2-8C with an appropriate antibacterial agent. Glycerol (1:1) may be added for additional stability. Avoid repetitive freeze/thaw cycles.
Expiry Date:	12 months after purchase



Left: Western blot detection of Nuclear receptor TLX expression in mouse NIH/ Swiss embryo cell lysate. Right: Analysis of Nuclear Receptor TLX expression in rat C6 glioma cell line by Flow Cytometry. Fixing and Permeabilization of cells: Absolute methanol (10 minutes in ice) and 0.1% Tween-20 in PBS, Blocking: 200 ug/mL normal sheep IgG, Primary antibody: Mouse monoclonal antibody to human Nuclear Receptor TLX (1C4, cat # M-920-100, 2 μg per ~10⁶ cells) for 30 minutes at room temperature, Secondary antibody: Goat anti-mouse PE labeled secondary antibody (1:100 fold dilution) with incubation for 20 minutes in dark at room temperature. Non-specific Control IgG, clone X63 (cat # M-1249-200) was used as negative control under same conditions (black dashed). Flow cytometry data and results were generated using Orflo Moxiflow™ instrument and protocols.

FOR RESEARCH USE ONLY



**Mouse monoclonal antibody to human Nuclear receptor TLX
[1C4]: IgG**

biosensis

FOR RESEARCH USE ONLY

51 West Thebarton Road • Thebarton • South Australia 5031
Telephone + 61(0)8 8352 7711 • Email sales@biosensis.com • www.biosensis.com