

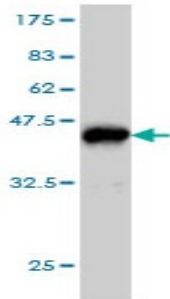
## Mouse monoclonal antibody to human PAFAH alpha [2C12]: IgG

<b>Catalogue No.:</b>	M-855-100
<b>Description:</b>	PAFAH alpha encodes the non-catalytic alpha subunit of the intracellular Ib isoform of platelet-activating factor acetylhydrolase, a heterotrimeric enzyme that specifically catalyzes the removal of the acetyl group at the SN-2 position of platelet-activating factor. Two other isoforms of intracellular platelet-activating factor acetylhydrolase exist: one composed of multiple subunits, the other, a single subunit. In addition, a single-subunit isoform of this enzyme is found in serum. It is expressed ubiquitously in both the frontal and occipital areas of the brain. Defects in PAFAH alpha cause lissencephaly type 1 (LIS1) and of subcortical band heterotopia (SBH). Defects in PAFAH alpha are also a cause of Miller-Dieker lissencephaly syndrome (MLDS).
<b>Batch No.:</b>	See product label
<b>Unit size:</b>	100 ug
<b>Antigen:</b>	Partial recombinant human PAFAH alpha (1-111) with a GST tag.
<b>Clone:</b>	2C12
<b>Other Names:</b>	Platelet-activating factor acetylhydrolase IB subunit alpha; PAF acetylhydrolase 45 kDa subunit; PAF-AH 45 kDa subunit; PAF-AH alpha; PAFAH alpha; Lissencephaly-1 protein; LIS-1; PAFAH1B1; LIS1; MDCR; MDS; PAFAHA
<b>Accession:</b>	LIS1_HUMAN
<b>Produced in:</b>	Mouse
<b>Purity:</b>	Protein G purified immunoglobulin
<b>Applications:</b>	This antibody is recommended for WB and sandwich ELISA. Biosensis recommends optimal dilutions/concentrations should be determined by the end user.
<b>Specificity:</b>	Specificity has been confirmed by WB and direct ELISA against the antigen.
<b>Cross-reactivity:</b>	Human. Other species have not been tested.
<b>Form:</b>	Lyophilised from PBS pH 7.2
<b>Reconstitution:</b>	Reconstitute in 100 uL of sterile water. Centrifuge to remove any insoluble material.
<b>Storage:</b>	After reconstitution keep aliquots at -20C for higher stability or at 2-8C with an appropriate antibacterial agent. Glycerol (1:1) may be added for additional stability. Avoid repetitive freeze/thaw cycles.
<b>Expiry Date:</b>	12 months after purchase

---

FOR RESEARCH USE ONLY

## Mouse monoclonal antibody to human PAFAH alpha [2C12]: IgG



Western blot detection of GST tagged recombinant human PAFAH alpha.  
Note the GST tag alone has a molecular weight of 26 kDa.

biosensis

---

FOR RESEARCH USE ONLY