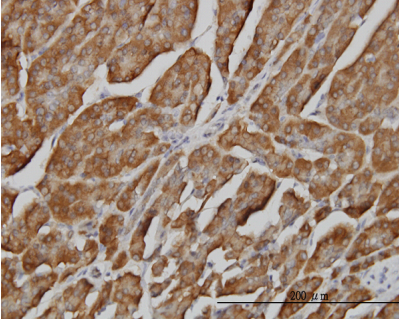


Mouse monoclonal antibody to human PIP [2E1]: IgG

| | |
|--------------------------|---|
| Catalogue No.: | M-805-100 |
| Description: | PIP belongs to the inositol monophosphatase family. It hydrolyses adenosine 3'-phosphate 5'-phosphosulfate to adenosine 5-phosphosulfate and 3',2'-phosphoadenosine 5'-phosphate to AMP. It requires magnesium as a cofactor. Lithium is an uncompetitive inhibitor and inositol 1,4-bisphosphate is a competitive inhibitor of PIP. Lithium is one of the drugs used to treat manic depression and the inhibition of PIP may account for lithium-induced nephrotoxicity. |
| Batch No.: | See product label |
| Unit size: | 100 ug |
| Antigen: | Recombinant protein of amino acids 1 to 100 of human PIP with a GST tag. |
| Clone: | [2E1] |
| Other Names: | 3',5'-bisphosphate nucleotidase 1; bisphosphatase 3'-nucleotidase 1; PAP-inositol-1;4-phosphotase; BPNT1 |
| Accession: | BPNT1_HUMAN |
| Produced in: | Mouse |
| Purity: | Protein G purified immunoglobulin |
| Applications: | This antibody is recommended for WB, ELISA, sandwich ELISA, IHC and immunofluorescence. It is recommended to be used at 3ug/mL for IHC and 10ug/mL for immunofluorescence. This antibody has a detection limit of 0.03ng/mL in sandwich ELISA when using the recombinant protein. Biosensis recommends optimal dilutions/concentrations should be determined by the end user. |
| Specificity: | The specificity of this antibody has been confirmed by WB against the recombinant protein and in HeLa cell lysate. |
| Cross-reactivity: | This antibody has not yet been tested in other species. |
| Form: | Lyophilised from PBS pH 7.2 |
| Reconstitution: | Reconstitute in 100 uL of sterile water. Centrifuge to remove any insoluble material. |
| Storage: | After reconstitution keep aliquots at -20C for higher stability or at 2-8C with an appropriate antibacterial agent. Glycerol (1:1) may be added for additional stability. Avoid repetitive freeze/thaw cycles. |
| Expiry Date: | 12 months after purchase |

FOR RESEARCH USE ONLY

Mouse monoclonal antibody to human PIP [2E1]: IgG



Immunohistochemistry of mouse monoclonal antibody to human PIP [2E1], catalogue number M-805-100, at a concentration of 3 μ g/ml, on formalin-fixed and paraffin-embedded human pancreas.

biosensis

FOR RESEARCH USE ONLY