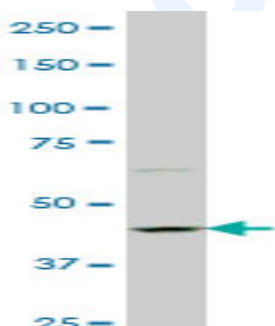


## Mouse monoclonal antibody to human Protein phosphatase 1, regulatory subunit 9A [6A10]: IgG

<b>Catalogue No.:</b>	M-901-100
<b>Description:</b>	Protein phosphatase 1, regulatory subunit 9A is 132 amino acid protein with an estimated molecular weight of ~148 kDa. It is thought to be involved in neurite formation.
<b>Batch No.:</b>	See product label
<b>Unit size:</b>	100 ug
<b>Antigen:</b>	Partial recombinant human Protein phosphatase 1, regulatory subunit 9A [1090-1188) with a GST tag.
<b>Isotype:</b>	IgG1 Kappa
<b>Clone:</b>	6A10
<b>Other Names:</b>	HCG1741805 isoform CRA_c; PPP1R9A; hCG_1741805; tcag7.281
<b>Accession:</b>	A4D110_HUMAN
<b>Produced in:</b>	Mouse
<b>Purity:</b>	Protein G purified immunoglobulin
<b>Applications:</b>	This antibody is recommended for WB and ELISA. Biosensis recommends optimal dilutions/concentrations should be determined by the end user.
<b>Specificity:</b>	Specificity has been confirmed by WB and ELISA against the antigen.
<b>Cross-reactivity:</b>	Human. Other species have not been tested.
<b>Form:</b>	Lyophilised from PBS pH 7.4
<b>Reconstitution:</b>	Reconstitute in 100 uL of sterile water. Centrifuge to remove any insoluble material.
<b>Storage:</b>	After reconstitution keep aliquots at -20C for higher stability or at 2-8C with an appropriate antibacterial agent. Glycerol (1:1) may be added for additional stability. Avoid repetitive freeze/thaw cycles.
<b>Expiry Date:</b>	12 months after purchase



Western blot detection of Protein phosphatase 1, regulatory subunit 9A expression in PC-12 cell lysate.

FOR RESEARCH USE ONLY