

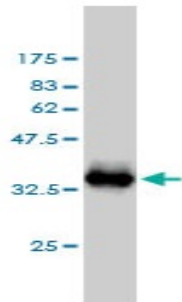
## Mouse monoclonal antibody to human Protein S100-A1 [1D5]: IgG

<b>Catalogue No.:</b>	M-863-100
<b>Description:</b>	Protein S100-A1 is a member of the S100 family of proteins containing 2 EF-hand calcium-binding motifs. S100 proteins are localized in the cytoplasm and/or nucleus of a wide range of cells, and involved in the regulation of a number of cellular processes such as cell cycle progression and differentiation. Protein S100-A1 exists as a dimer of either two alpha chains, two beta chains or one alpha and one beta chain. It weakly binds calcium but binds zinc very tightly and distinct binding sites with different affinities exist for both ions on each monomer. This protein is highly prevalent in heart and to a lesser extent in skeletal muscle and brain.
<b>Batch No.:</b>	See product label
<b>Unit size:</b>	100 ug
<b>Antigen:</b>	Partial recombinant human Protein S100-A1 (amino acids 1-75) with a GST tag.
<b>Clone:</b>	1D5
<b>Other Names:</b>	S100 calcium-binding protein A1 S-100 protein alpha subunit; S-100 protein alpha chain; Roundabout homolog 1; S100A1; S100A
<b>Accession:</b>	S10A1_HUMAN
<b>Produced in:</b>	Mouse
<b>Purity:</b>	Protein G purified immunoglobulin
<b>Applications:</b>	This antibody is recommended for WB and sandwich ELISA. Biosensis recommends optimal dilutions/concentrations should be determined by the end user.
<b>Specificity:</b>	Specificity has been confirmed by WB and direct ELISA against the antigen.
<b>Cross-reactivity:</b>	Human. Other species have not been tested.
<b>Form:</b>	Lyophilised from PBS pH 7.2
<b>Reconstitution:</b>	Reconstitute in 100 uL of sterile water. Centrifuge to remove any insoluble material.
<b>Storage:</b>	After reconstitution keep aliquots at -20C for higher stability or at 2-8C with an appropriate antibacterial agent. Glycerol (1:1) may be added for additional stability. Avoid repetitive freeze/thaw cycles.
<b>Expiry Date:</b>	12 months after purchase

---

FOR RESEARCH USE ONLY

## Mouse monoclonal antibody to human Protein S100-A1 [1D5]: IgG



Western blot detection of GST tagged recombinant human Protein S100-A1. Note the GST tag alone is 26 kDa.

biosensis

---

FOR RESEARCH USE ONLY