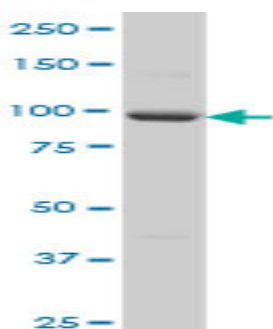


## Mouse monoclonal antibody to human Protocadherin alpha-5 [1E8]

<b>Catalogue No.:</b>	M-917-200
<b>Description:</b>	Protocadherin alpha-5 is 1 of 15 tandemly arranged genes within the PCDHA gene cluster. These 15 genes function as &#39;variable&#39; exons that are individually spliced to a downstream constant region to form distinct PCDHA transcripts. They encode cadherin-like cell surface proteins that are expressed in neurons and are present at synaptic junctions. These neural cadherin-like cell adhesion proteins are integral plasma membrane proteins that most likely play a critical role in the establishment and function of specific cell-cell connections in the brain.
<b>Batch No.:</b>	See product label
<b>Unit size:</b>	200 uL
<b>Antigen:</b>	Partial recombinant human Protocadherin alpha-5 [183-290] with a GST tag.
<b>Clone:</b>	[1E8]
<b>Other Names:</b>	PCDH-alpha-5; PCDHA5; CNRS6
<b>Accession:</b>	PCDA5_HUMAN
<b>Produced in:</b>	Mouse
<b>Purity:</b>	Ascites fluid
<b>Applications:</b>	This antibody is recommended for WB and ELISA. Biosensis recommends optimal dilutions/concentrations should be determined by the end user.
<b>Specificity:</b>	Specificity has been confirmed by WB and ELISA against the antigen.
<b>Cross-reactivity:</b>	Human. Other species have not been tested.
<b>Form:</b>	Lyophilised
<b>Reconstitution:</b>	Reconstitute in 200 uL of sterile water. Centrifuge to remove any insoluble material.
<b>Storage:</b>	Keep aliquots at -20C for higher stability or at 2-8C with an appropriate antibacterial agent. Avoid repetitive freeze/thaw cycles.
<b>Expiry Date:</b>	12 months after purchase



Western blot detection of human Protocadherin alpha-5 expression in HeLa cell lysate.

FOR RESEARCH USE ONLY