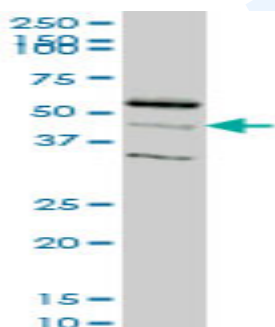


Mouse monoclonal antibody to human RAPGEFL1 [4G2]: IgG

Catalogue No.:	M-897-100
Description:	RAPGEFL1 is a 456 amino acid protein with an estimated molecular weight of ~52 kDa. It is a guanine-nucleotide releasing factor and contains one Ras-GEF domain.
Batch No.:	See product label
Unit size:	100 µg
Antigen:	Partial recombinant human RAPGELF1 (1-100) with a GST tag.
Clone:	4G2
Other Names:	Rap guanine nucleotide exchange factor-like protein 1; Link guanine nucleotide exchange factor II
Accession:	Q9UHV5_HUMAN
Produced in:	Mouse
Purity:	Protein G purified immunoglobulin
Applications:	This antibody is recommended for WB, and sandwich ELISA. Biosensis recommends optimal dilutions/concentrations should be determined by the end user.
Specificity:	Specificity has been confirmed by WB and direct ELISA against the antigen.
Cross-reactivity:	Human and mouse. Other species have not been tested.
Form:	Lyophilised from PBS pH 7.2
Reconstitution:	Reconstitute in 100 µL of sterile water. Centrifuge to remove any insoluble material.
Storage:	After reconstitution keep aliquots at -20C for higher stability or at 2-8C with an appropriate antibacterial agent. Glycerol (1:1) may be added for additional stability. Avoid repetitive freeze/thaw cycles.
Expiry Date:	12 months after purchase



Western blot detection of RAPGEFL1 expression in human neuroblastoma cell lysate.

FOR RESEARCH USE ONLY