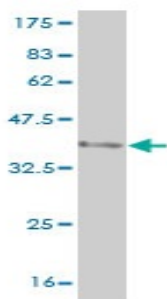


Mouse monoclonal antibody to human SEMA4B [4B2]: IgG

Catalogue No.:	M-889-100
Description:	SEMA4B is a 837 amino acid polypeptide that has an estimated molecular weight of 92.7 kDa. It contains a Sema domain which occurs in semaphorins, which are a large family of secreted and transmembrane proteins, some of which function as repellent signals during axon guidance. It also contains a a PSI domain (plexin repeat). This is a cysteine rich repeat found in several different extracellular receptors.
Batch No.:	See product label
Unit size:	100 ug
Antigen:	Partial recombinant human SEMA4B (592-659) with a GST tag.
Clone:	4B2
Other Names:	Sema domain; immunoglobulin domain (Ig); transmembrane domain (TM) and short cytoplasmic domain; (Semaphorin) 4B
Accession:	Q2NL81_HUMAN
Produced in:	Mouse
Purity:	Protein G purified immunoglobulin
Applications:	This antibody is recommended for WB and sandwich ELISA. Biosensis recommends optimal dilutions/concentrations should be determined by the end user.
Specificity:	Specificity has been confirmed by WB and direct ELISA against the antigen.
Cross-reactivity:	Human. Other species have not been tested.
Form:	Lyophilised from PBS pH 7.2
Reconstitution:	Reconstitute in 100 uL of sterile water. Centrifuge to remove any insoluble material.
Storage:	After reconstitution keep aliquots at -20C for higher stability or at 2-8C with an appropriate antibacterial agent. Glycerol (1:1) may be added for additional stability. Avoid repetitive freeze/thaw cycles.
Expiry Date:	12 months after purchase



Western blot detection of GST tagged recombinant human SEMA4B.

FOR RESEARCH USE ONLY