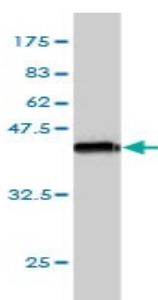


## Mouse monoclonal antibody to human Semaphorin-3A [5G9]: IgG

<b>Catalogue No.:</b>	M-886-50
<b>Description:</b>	Semaphorin-3A is a secreted protein that induces the collapse and paralysis of neuronal growth cones. It could serve as a ligand that guides specific growth cones by a motility-inhibiting mechanism. It Binds to the complex neuropilin-1/plexin-1. Increased expression of this protein is associated with schizophrenia and is seen in a variety of human tumor cell lines. Also, aberrant release of this protein is associated with the progression of Alzheimer's disease.
<b>Batch No.:</b>	See product label
<b>Unit size:</b>	50 ug
<b>Antigen:</b>	Partial recombinant human Semaphorin 3A (672-770) with a GST tag.
<b>Isotype:</b>	IgG2a Kappa
<b>Clone:</b>	5G9
<b>Other Names:</b>	Semaphorin III; Sema III; SEMA3A; SEMAD
<b>Accession:</b>	SEM3A_HUMAN
<b>Produced in:</b>	Mouse
<b>Purity:</b>	Protein G purified immunoglobulin
<b>Applications:</b>	This antibody is recommended for WB, and ELISA. Biosensis recommends optimal dilutions/concentrations should be determined by the end user.
<b>Specificity:</b>	Specificity has been confirmed by WB and direct ELISA against the antigen.
<b>Cross-reactivity:</b>	Human. Other species have not been tested.
<b>Form:</b>	Lyophilised from PBS pH 7.4
<b>Reconstitution:</b>	Reconstitute in 50 uL of sterile water. Centrifuge to remove any insoluble material.
<b>Storage:</b>	Store lyophilized antibody at 2-8C. After reconstitution keep aliquots at -20C for higher stability or at 2-8C with an appropriate antibacterial agent. Glycerol (1:1) may be added for additional stability. Avoid repetitive freeze/thaw cycles.
<b>Expiry Date:</b>	12 months after purchase



Western blot detection of GST tagged recombinant human Semaphorin-3A. Note GST tag alone is 26 kDa.

FOR RESEARCH USE ONLY