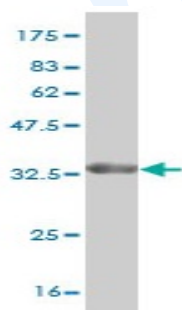


Mouse monoclonal antibody to human Stathmin-2 [1C6]: IgG

Catalogue No.:	M-890-100
Description:	Stathmin-2 is a neuronal growth-associated protein that shares significant amino acid sequence similarity with the phosphoprotein stathmin. It may play a role in neuronal differentiation, and in modulating membrane interaction with the cytoskeleton during neurite outgrowth. It is neuron specific and belongs to the stathmin family.
Batch No.:	See product label
Unit size:	100 ug
Antigen:	Partial recombinant human Stathmin-2 (1-90) with a GST tag.
Isotype:	IgG2a, kappa
Clone:	1C6
Other Names:	Superior cervical ganglion-10 protein; Protein SCG10; STMN2; SCG10; SCGN10
Accession:	STMN2_HUMAN
Produced in:	Mouse
Purity:	Protein G purified immunoglobulin
Applications:	This antibody is recommended for WB and sandwich ELISA. Biosensis recommends optimal dilutions/concentrations should be determined by the end user.
Specificity:	Specificity has been confirmed by WB and direct ELISA against the antigen.
Cross-reactivity:	Human. Other species have not been tested.
Form:	Lyophilised from PBS pH 7.2
Reconstitution:	Reconstitute in 100 uL of sterile water. Centrifuge to remove any insoluble material.
Storage:	Store lyophilized antibody at 2-8C. After reconstitution keep aliquots at -20C for higher stability or at 2-8C with an appropriate antibacterial agent. Glycerol (1:1) may be added for additional stability. Avoid repetitive freeze/thaw cycles.
Expiry Date:	12 months after purchase



Western blot detection of GST tagged recombinant human Stathmin-2.

FOR RESEARCH USE ONLY