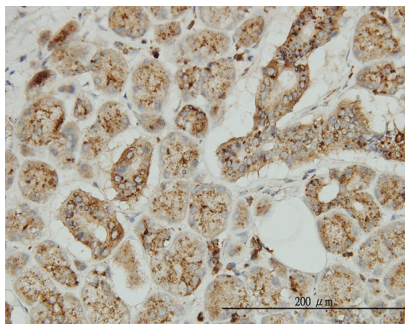


Mouse monoclonal antibody to human TPP-1 [3B1]: IgG

Catalogue No.:	M-802-100
Description:	TPP1 is a lysosomal serine protease with tripeptidyl-peptidase I activity. It may act as a non-specific lysosomal peptidase which releases an N-terminal tripeptide from the breakdown products produced by lysosomal proteinases. Requires substrates with an unsubstituted N-terminus. TPP1 is detected in lysosomes and melanosomes in all tissues but it is highest in the heart and placenta. TPP1 is activated by autocatalytic proteolytic processing upon acidification within lysosomes. Defects in TPP1 cause classical late-infantile neuronal ceroid lipofuscinosis (LINCL) which is also known as ceroid lipofuscinosis 2 (CLN2). It is a fatal childhood neurodegenerative disease characterised by progressive visual and mental deterioration, motor disturbance, epilepsy and behavioural changes.
Batch No.:	See product label
Unit size:	100 ug
Antigen:	Partial recombinant protein of human TPP1 (amino acids 195 to 305) with a GST tag.
Clone:	3B1
Other Names:	Tripeptidyl-peptidase 1; TPP-I; Tripeptidyl aminopeptidase; Lysosomal pepstatin-insensitive protease; LPIC; Cell growth-inhibiting gene 1 protein; TPP1; CLN2
Accession:	TPP1_HUMAN
Produced in:	Mouse
Purity:	Protein G purified immunoglobulin
Applications:	This antibody is recommended for direct and sandwich ELISA, IHC and WB. Biosensis recommends optimal dilutions/concentrations should be determined by the end user.
Specificity:	The specificity of this antibody was confirmed by WB and ELISA against the immunogen.
Cross-reactivity:	Human. Other species have not been tested.
Form:	Lyophilised from PBS, pH 7.6
Reconstitution:	Reconstitute in 100 uL of sterile water. Centrifuge to remove any insoluble material.
Storage:	After reconstitution keep aliquots at -20C for higher stability or at 2-8C with an appropriate antibacterial agent. Glycerol (1:1) may be added for additional stability. Avoid repetitive freeze/thaw cycles.
Expiry Date:	12 months after purchase



Immunohistochemical detection of TPP1 in formalin fixed, paraffin-embedded human salivary gland using mouse monoclonal antibody to human TPP1 [3B1], catalogue number M-802-100

FOR RESEARCH USE ONLY