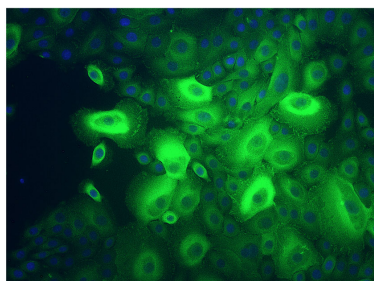


## Mouse monoclonal antibody to human Vinculin: IgG

<b>Catalogue No.:</b>	M-1228-100
<b>Description:</b>	Vinculin is a cytoskeletal protein associated with cell-cell and cell-matrix adherens type junctions. Multiple isoforms are produced by alternative splicing.
<b>Batch No.:</b>	See product label
<b>Unit size:</b>	100 ug
<b>Antigen:</b>	Purified Vinculin from human uterus
<b>Other Names:</b>	Metavinculin; VCL;
<b>Accession:</b>	P18206 VINC_HUMAN;
<b>Produced in:</b>	Mouse
<b>Purity:</b>	IgG1
<b>Applications:</b>	Immunohistochemistry (IHC), Immunocytochemistry (IC) and Western Blotting (WB). A concentration of 1.0-2.0 ug/mL is recommended for WB. Human Vinculin (isoform 2, Metavinculin) has a predicted length of 1,134 residues and a MW of 124 kDa. A concentration of 2.0-4.0 ug/mL is recommended to detect the protein in formalin/acetone fixed frozen tissues. A concentration of 2.0 ug/mL is recommended for IC. Biosensis recommends optimal dilutions/concentrations should be determined by the end user.
<b>Specificity:</b>	The specificity of this antibody has been confirmed by WB and IHC against the antigen.
<b>Cross-reactivity:</b>	Human; mouse; rat; chicken;
<b>Form:</b>	Lyophilized from 1.2% sodium acetate, 2mg BSA, 0.01mg NaN3
<b>Reconstitution:</b>	Reconstitute in 1 mL of PBS (pH 7.4) to achieve an antibody concentration of 100 ug/mL. Centrifuge to remove any insoluble material.
<b>Storage:</b>	At least 12 months after purchase at 2-8C (lyophilized formulations). After reconstitution, aliquot and store at -20C for a higher stability. Avoid freeze-thaw cycles.
<b>Expiry Date:</b>	12 months after purchase (unopened).



Vinculin staining in fixed and permeabilized normal human epidermal keratinocytes by Immunocytochemistry. Vinculin-IR (green) is observed in the cytoplasm, consistent with expected cellular localization. Blue: Nuclei. Magnification: 32X. Image courtesy of QBM Cell Science.

---

FOR RESEARCH USE ONLY