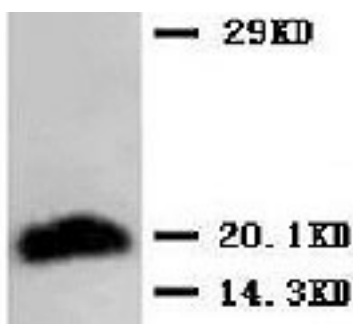


Mouse monoclonal antibody to slow skeletal Myosin [IML-64]: IgG

Catalogue No.:	M-1203-100
Description:	THIS PRODUCT HAS BEEN SUPERCEDED. PLEASE REFER TO THE "REPLACED BY" FIELD BELOW TO LOCATE THE CURRENT BIOSENSIS PRODUCT TO MEET YOUR RESEARCH NEEDS. Myosin is a hexameric protein that consists of two heavy chain subunits and two pairs of non-identical light chain subunits. This antibody recognizes an epitope located on a light chain subunit of human adult skeletal muscle myosin.
Replaced by:	M-1830-100
Batch No.:	See product label
Unit size:	100 ug
Antigen:	Human skeletal muscle myosin purified from myofibrils
Clone:	IML-64
Other Names:	Myosin II; MLC1/MLC3; MYL1; MLC1F/MLC3F; MYL2; MLC-2; MLC-2v;
Accession:	P05976 MYL1_HUMAN; P10916 MLRV_HUMAN;
Produced in:	Mouse
Purity:	IgG
Applications:	Immunohistochemistry (IHC) and Western Blotting (WB). A concentration of 0.5-2.0 ug/mL is recommended for WB. A concentration of 1.0-2.0 ug/mL is recommended to detect the protein in formalin fixed and paraffin embedded tissues. Biosensis recommends optimal dilutions/concentrations should be determined by the end user.
Specificity:	The specificity of this antibody has been confirmed by WB and IHC against the antigen.
Cross-reactivity:	Human; rat;
Form:	Liquid (0.5ml). 50% glycerol, 0.9mg NaCl and 0.2mg Na ₂ HPO ₄
Reconstitution:	The liquid formulation should be diluted in PBS (pH 7.4)
Storage:	After reconstitution, aliquot and store at -20C for a higher stability. Avoid freeze-thaw cycles.
Expiry Date:	12 months after purchase



Western Blot using rat skeletal muscle lysate. Mouse monoclonal antibody to slow skeletal Myosin [IML-64] antibody, catalog number M-1203-100 was added at 1 ug/ml and the secondary antibody was HRP-goat anti-mouse IgG at a dilution of 1:3000.

FOR RESEARCH USE ONLY