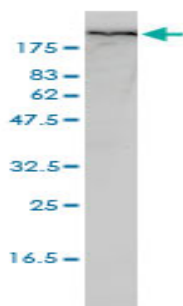


## Mouse monoclonal to human Filamin A [4E10-1B2]: IgG

<b>Catalogue No.:</b>	M-835-100
<b>Description:</b>	Filamin A, is a 280-kD protein that promotes orthogonal branching of actin filaments cortical cytoplasm. It anchors various transmembrane proteins to the actin cytoskeleton and serves as a scaffold for a wide range of cytoplasmic signaling proteins. Remodeling of the cytoskeleton is central to the modulation of cell shape and migration.
<b>Batch No.:</b>	See product label
<b>Unit size:</b>	100 ug
<b>Antigen:</b>	Partial recombinant protein of human Filamin A (aa 1809 to 2647) with a GST tag.
<b>Clone:</b>	4E10-1B2
<b>Other Names:</b>	Alpha-filamin; Filamin-1; Endothelial actin-binding protein; Actin-binding protein 280; ABP-280; Non-muscle filamin; FLNA; FLN; FLN1
<b>Accession:</b>	FLNA_HUMAN
<b>Produced in:</b>	Mouse
<b>Purity:</b>	Protein G purified immunoglobulin
<b>Applications:</b>	This antibody is recommended for WB, IHC and sandwich ELISA. Biosensis recommends optimal dilutions/concentrations should be determined by the end user.
<b>Specificity:</b>	Specificity has been confirmed by WB and direct ELISA against the antigen.
<b>Cross-reactivity:</b>	Human. Other species have not been tested.
<b>Form:</b>	Lyophilised from PBS pH 7.2
<b>Reconstitution:</b>	Reconstitute in 100 uL of sterile water. Centrifuge to remove any insoluble material.
<b>Storage:</b>	After reconstitution keep aliquots at -20C for higher stability or at 2-8C with an appropriate antibacterial agent. Glycerol (1:1) may be added for additional stability. Avoid repetitive freeze/thaw cycles.
<b>Expiry Date:</b>	12 months after purchase



Western blot detection of Filamin A in human promyelocytic leukemia cell lysate using mouse monoclonal to human Filamin A, catalogue number M-835-100.

FOR RESEARCH USE ONLY