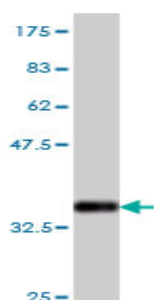


Mouse monoclonal to human G-protein coupled receptor 127 [2H8]: IgG

Catalogue No.:	M-830-100
Description:	This protein is a member of the G-protein coupled receptor 2 family and the LN-TM7 subfamily. This protein could mediate the cellular interaction between myeloid cells and B cells. It forms a heterodimer, consisting of a large extracellular region (alpha-subunit) non-covalently linked to a seven-transmembrane moiety (beta subunit). This protein however, could be a product of a pseudogene as it seems to have become non-functional after human-chimpanzee speciation.
Batch No.:	See product label
Unit size:	100 ug
Antigen:	Partial recombinant protein of human G-coupled protein receptor 127 (aa 21 to 93) with a GST tag.
Clone:	2H8
Other Names:	Putative EGF-like module-containing mucin-like hormone receptor-like 4; G-protein coupled receptor PGF16; EMR4; GPR127; PGR16
Accession:	EMR4_HUMAN
Produced in:	Mouse
Purity:	Protein G purified immunoglobulin
Applications:	This antibody is recommended for WB and sandwich ELISA. Biosensis recommends optimal dilutions/concentrations should be determined by the end user.
Specificity:	Specificity has been confirmed by WB and direct ELISA against the antigen.
Cross-reactivity:	Human. Other species have not been tested.
Form:	Lyophilised from PBS
Reconstitution:	Reconstitute in 100 uL of sterile water. Centrifuge to remove any insoluble material.
Storage:	After reconstitution keep aliquots at -20C for higher stability or at 2-8C with an appropriate antibacterial agent. Glycerol (1:1) may be added for additional stability. Avoid repetitive freeze/thaw cycles.
Expiry Date:	12 months after purchase



Western blot detection of antigen using mouse monoclonal to human G-protein coupled receptor 127, catalogue number M-830-100.

FOR RESEARCH USE ONLY