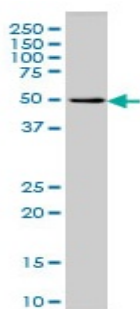


Mouse monoclonal to human G-protein coupled receptor 24 [3D7]: IgG

Catalogue No.:	M-839-100
Description:	G-protein coupled receptor 24 belongs to the G-protein coupled receptor 1 family and binds melanin-concentrating hormone. It is coupled to both G proteins that inhibit adenylyl cyclase and G proteins that activate phosphoinositide hydrolysis. It is a transmembrane protein that is highly expressed in the brain, in particularly in the frontal cortex and hypothalamus. It is also expressed in the liver and heart at lower levels.
Batch No.:	See product label
Unit size:	100 ug
Antigen:	Partial recombinant protein of human G-protein coupled receptor 24 (aa 14 to 114) with a GST tag.
Clone:	3D7
Other Names:	Melanin-concentrating hormone receptor 1; MCH receptor 1; MCHR-1; MCH-R1; MCH-1R; MCH1R; MCHR; Somatostatin receptor-like protein; SLC-1; MCHR1; GPR24; SLC1
Accession:	MCHR1_HUMAN
Produced in:	Mouse
Purity:	Protein G purified immunoglobulin
Applications:	This antibody is recommended for WB, and sandwich ELISA. Biosensis recommends optimal dilutions/concentrations should be determined by the end user.
Specificity:	Specificity has been confirmed by WB and direct ELISA against the antigen.
Cross-reactivity:	Human. Other species have not been tested.
Form:	Lyophilised from PBS pH 7.2
Reconstitution:	Reconstitute in 100 uL of sterile water. Centrifuge to remove any insoluble material.
Storage:	After reconstitution keep aliquots at -20C for higher stability or at 2-8C with an appropriate antibacterial agent. Glycerol (1:1) may be added for additional stability. Avoid repetitive freeze/thaw cycles.
Expiry Date:	12 months after purchase



Western blot detection of G-protein coupled receptor 24 in human promyelocytic leukemia lysate using Mouse monoclonal antibody to human G-protein coupled receptor 24, catalogue number M-839-100.

FOR RESEARCH USE ONLY