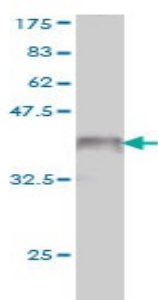


Mouse monoclonal to human Orexin receptor type 2 [1E3]: IgG

| | |
|--------------------------|---|
| Catalogue No.: | M-840-100 |
| Description: | Orexin receptor type 2 is a nonselective, high-affinity receptor for both orexin-A and orexin-B neuropeptides. It is involved in the central feedback mechanism that regulates feeding behaviour. It is a transmembrane protein and belongs to the G-protein coupled receptor 1 family. |
| Batch No.: | Refer to product label |
| Unit size: | 100 ug |
| Antigen: | Partial recombinant protein of human Orexin receptor type 2 (aa 1 to 55) with a GST tag. |
| Clone: | [1E3] |
| Other Names: | Ox2r; Hypocretin receptor type 2; HCRTR2 |
| Accession: | OX2R_HUMAN |
| Produced in: | Mouse |
| Purity: | Protein G purified immunoglobulin |
| Applications: | This antibody is recommended for WB, and sandwich ELISA. Biosensis recommends optimal dilutions/concentrations should be determined by the end user. |
| Specificity: | Specificity has been confirmed by WB and direct ELISA against the antigen. |
| Cross-reactivity: | Human. Other species have not been tested. |
| Form: | Lyophilised from PBS pH 7.2 |
| Reconstitution: | Reconstitute in 100 uL of sterile water. Centrifuge to remove any insoluble material. |
| Storage: | After reconstitution keep aliquots at -20C for higher stability or at 2-8C with an appropriate antibacterial agent. Glycerol (1:1) may be added for additional stability. Avoid repetitive freeze/thaw cycles. |
| Expiry Date: | 12 months after purchase |



WB detection of the antigen using mouse monoclonal antibody to human orexin receptor type 2, catalogue number M-840-100. Note the GST tag alone has a molecular weight of 26KDa.

FOR RESEARCH USE ONLY