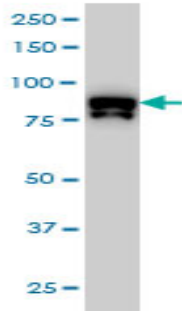


Mouse monoclonal to human protein kinase minibrain homolog [7D10]: IgG

Catalogue No.:	M-829-100
Description:	Protein kinase minibrain homolog phosphorylates serine, threonine and tyrosine residues in its sequence as well as in exogenous substrates. It may play a significant role in a signaling pathway regulating cell proliferation and may be involved in brain development. There are 5 named isoforms produced by alternative splicing. It is expressed ubiquitously with highest levels in skeletal muscle, testis, fetal lung and kidney, and in the developing central nervous system. It localises to the nucleus speckle. This protein is overexpressed 1.5-fold in fetal Down syndrome brain and considered a strong candidate for learning defects associated with Down syndrome. It belongs to the protein kinase superfamily, CMGC ser/Thr protein kinase family and MNB/DYRK subfamily.
Batch No.:	See product label
Unit size:	100 ug
Antigen:	Partial recombinant protein of human protein kinase minibrain homolog (aa 674 to 763) with a GST tag.
Clone:	7D10
Other Names:	Dual specificity tyrosine-phosphorylation-regulated kinase 1A; MNBH; HP86; Dual specificity YAK1-related kinase; hMNB; DYRK1A
Accession:	DYR1A_HUMAN
Produced in:	Mouse
Purity:	Protein G purified immunoglobulin
Applications:	Direct and sandwich ELISA and WB are recommended for this antibody. Biosensis recommends optimal dilutions/concentrations should be determined by the end user.
Specificity:	Specificity has been confirmed by WB and direct ELISA against the antigen.
Cross-reactivity:	This antibody cross reacts with mouse and rat protein kinase minibrain homolog proteins.
Form:	Lyophilised from PBS pH 7.2
Reconstitution:	Reconstitute in 100 uL of sterile water. Centrifuge to remove any insoluble material.
Storage:	After reconstitution keep aliquots at -20C for higher stability or at 2-8C with an appropriate antibacterial agent. Glycerol (1:1) may be added for additional stability. Avoid repetitive freeze/thaw cycles.
Expiry Date:	12 months when stored at -20°C

FOR RESEARCH USE ONLY

Mouse monoclonal to human protein kinase minibrain homolog [7D10]: IgG



Western blot analysis on HeLa nuclear extract lysate using mouse monoclonal to human protein kinase minibrain homolog, catalogue number M-829-100.

biosensis

FOR RESEARCH USE ONLY