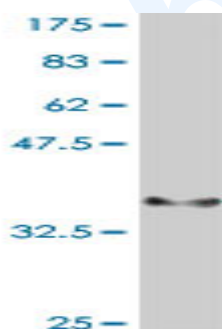


## Mouse polyclonal antibody to human Notch 2: whole serum

<b>Catalogue No.:</b>	Mo-933-50
<b>Description:</b>	Notch 2 functions as a receptor for membrane-bound ligands Jagged1, Jagged2 and Delta1 to regulate cell-fate determination. Upon ligand activation through the released notch intracellular domain (NICD) it forms a transcriptional activator complex with RBP-J kappa and activates genes of the enhancer of split locus. Notch 2 is cleaved in the trans-Golgi network, and presented on the cell surface as a heterodimer. It is expressed in the brain, heart, kidney, lung, skeletal muscle and liver. Defects in Notch 2 are the cause of Alagille syndrome type 2 which is a multisystem disorder defined by hepatic bile duct paucity and cholestasis in association with cardiac, skeletal and ophthalmologic manifestations.
<b>Batch No.:</b>	See product label
<b>Unit size:</b>	50 uL
<b>Antigen:</b>	Partial recombinant human Notch 2 (26-136) with a GST tag.
<b>Other Names:</b>	Neurogenic locus notch homolog protein 2; hN2; NOTCH2
<b>Accession:</b>	NOTC2_HUMAN
<b>Produced in:</b>	Mouse
<b>Purity:</b>	Whole serum
<b>Applications:</b>	This antibody is recommended for WB and ELISA. Biosensis recommends optimal dilutions/concentrations should be determined by the end user.
<b>Specificity:</b>	Specificity has been confirmed by WB and direct ELISA against the antigen.
<b>Cross-reactivity:</b>	Human. Other species have not been tested.
<b>Form:</b>	Liquid. 50% glycerol
<b>Storage:</b>	Keep aliquots at -20C for higher stability or at 2-8C with an appropriate antibacterial agent. Avoid repetitive freeze/thaw cycles.
<b>Expiry Date:</b>	12 months after purchase



Western blot detection of GST tagged recombinant human Notch 2. Note the GST tag alone is 26 kDa.

FOR RESEARCH USE ONLY