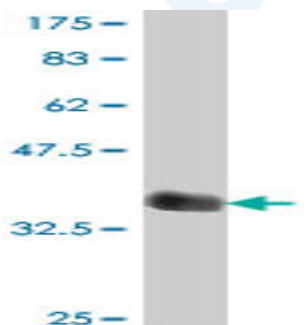


## Mouse polyclonal antibody to human Protocadherin alpha-11: whole serum

<b>Catalogue No.:</b>	Mo-947-50
<b>Description:</b>	Protocadherin alpha-11 is 1 of 15 tandemly arranged genes within the PCDHA gene cluster. These 15 N-terminal &#39;variable&#39; exons are individually spliced to a downstream C-terminal constant region to form distinct PCDHA transcripts. The large, uninterrupted N-terminal exons each encode six cadherin ectodomains while the C-terminal exons encode the cytoplasmic domain. The PCDH proteins are cadherin-like cell surface proteins that are expressed in neurons and are present at synaptic junctions. These neural cadherin-like cell adhesion proteins most likely play a critical role in the establishment and function of specific cell-cell connections in the brain.
<b>Batch No.:</b>	See product label
<b>Unit size:</b>	50 uL
<b>Antigen:</b>	Partial recombinant human PCDH-alpha-11 (203-291) with a GST tag.
<b>Other Names:</b>	PCDH-alpha-11; PCDHA11; CNRS7
<b>Accession:</b>	PCDAB_HUMAN
<b>Produced in:</b>	Mouse
<b>Purity:</b>	Whole serum
<b>Applications:</b>	This antibody is recommended for WB and ELISA. Biosensis recommends optimal dilutions/concentrations should be determined by the end user.
<b>Specificity:</b>	Specificity has been confirmed by WB and direct ELISA against the antigen.
<b>Cross-reactivity:</b>	Human. Other species have not been tested.
<b>Form:</b>	Liquid. 50% glycerol
<b>Storage:</b>	Keep aliquots at -20C for higher stability or at 2-8C with an appropriate antibacterial agent. Avoid repetitive freeze/thaw cycles.
<b>Expiry Date:</b>	12 months after purchase



Western blot detection of GST tagged recombinant human Protocadherin alpha-11. Note the GST tag alone is 26 kDa.

FOR RESEARCH USE ONLY