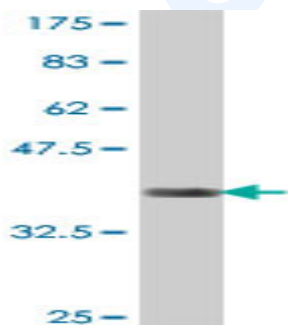


## Mouse polyclonal antibody to human Protocadherin alpha-3: whole serum

|                          |   |
|--------------------------|---|
| <b>Catalogue No.:</b>    | Mo-949-50   |
| <b>Description:</b>      | Protocadherin alpha-3 is 1 of 15 tandemly arranged genes within the PCDHA gene cluster. These 15 N-terminal 'variable' exons are individually spliced to a downstream C-terminal constant region to form distinct PCDHA transcripts. The large, uninterrupted N-terminal exons each encode six cadherin ectodomains while the C-terminal exons encode the cytoplasmic domain. The PCDH proteins are cadherin-like cell surface proteins that are expressed in neurons and are present at synaptic junctions. These neural cadherin-like cell adhesion proteins most likely play a critical role in the establishment and function of specific cell-cell connections in the brain. |
| <b>Batch No.:</b>        | See product label   |
| <b>Unit size:</b>        | 50 uL   |
| <b>Antigen:</b>          | Partial recombinant human PCDH-alpha-3 (180-287) with a GST tag.  |
| <b>Other Names:</b>      | PCDH-alpha-3; PCDHA3  |
| <b>Accession:</b>        | PCDA3_HUMAN   |
| <b>Produced in:</b>      | Mouse   |
| <b>Purity:</b>           | Whole serum   |
| <b>Applications:</b>     | This antibody is recommended for WB and ELISA. Biosensis recommends optimal dilutions/concentrations should be determined by the end user.  |
| <b>Specificity:</b>      | Specificity has been confirmed by WB and direct ELISA against the antigen.  |
| <b>Cross-reactivity:</b> | Human. Other species have not been tested.  |
| <b>Form:</b>             | Liquid. 50% glycerol  |
| <b>Storage:</b>          | Keep aliquots at -20C for higher stability or at 2-8C with an appropriate antibacterial agent. Avoid repetitive freeze/thaw cycles.   |
| <b>Expiry Date:</b>      | 12 months after purchase  |



Western blot detection of GST tagged recombinant human Protocadherin alpha-3. Note the GST tag alone is 26 kDa.

FOR RESEARCH USE ONLY