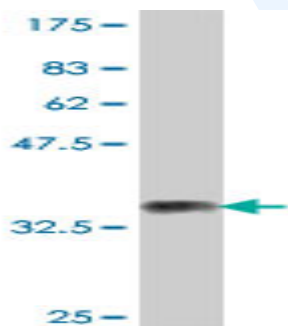


Mouse polyclonal antibody to human Semaphorin 4G: whole serum

Catalogue No.:	Mo-953-50
Description:	Semaphorins are a large family of conserved secreted and membrane associated proteins which possess a semaphorin (Sema) domain and a PSI domain (found in plexins, semaphorins and integrins) in the N-terminal extracellular portion. There are eight classes of Semaphorins. Semaphorin 4G is a transmembrane protein that may play a role in axon guidance. It belongs to the semaphorin family.
Batch No.:	See product label
Unit size:	50 uL
Antigen:	Partial recombinant human Semaphorin 4G (24-115) with a GST tag.
Other Names:	SEMA4G; KIAA1619
Accession:	SEM4G_HUMAN
Produced in:	Mouse
Purity:	Whole serum
Applications:	This antibody is recommended for WB and ELISA. Biosensis recommends optimal dilutions/concentrations should be determined by the end user.
Specificity:	Specificity has been confirmed by WB and direct ELISA against the antigen.
Cross-reactivity:	Human. Other species have not been tested.
Form:	Liquid. 50% glycerol
Storage:	Keep aliquots at -20C for higher stability or at 2-8C with an appropriate antibacterial agent. Avoid repetitive freeze/thaw cycles.
Expiry Date:	12 months after purchase



Western blot detection of GST tagged recombinant human Semaphorin 4G. Note the GST tag alone is 26 kDa.

FOR RESEARCH USE ONLY