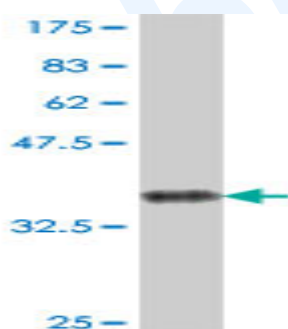


## Mouse polyclonal antibody to human Semaphorin 5A: whole serum

<b>Catalogue No.:</b>	Mo-938-50
<b>Description:</b>	Members of the semaphorin protein family, such as Semaphorin 5A, are involved in axonal guidance during neural development. Semaphorin 5A acts as a bifunctional guidance cue, exerting both attractive and inhibitory effects on developing axons of the fasciculus retroflexus (FR), a diencephalon fiber tract associated with limbic function. Neuronal responses to Semaphorin 5A are dependent on the bound proteoglycan and the biologic context. Mammalian plexin B3 is a high-affinity Semaphorin 5A receptor.
<b>Batch No.:</b>	See product label
<b>Unit size:</b>	50 uL
<b>Antigen:</b>	Partial recombinant human Semaphorin 5A (393-499) with a GST tag.
<b>Other Names:</b>	Semaphorin F; Sema F; SEMA5A; SEMAF
<b>Accession:</b>	SEM5A_HUMAN
<b>Produced in:</b>	Mouse
<b>Purity:</b>	Whole serum
<b>Applications:</b>	This antibody is recommended for WB and ELISA. Biosensis recommends optimal dilutions/concentrations should be determined by the end user.
<b>Specificity:</b>	Specificity has been confirmed by WB and direct ELISA against the antigen.
<b>Cross-reactivity:</b>	Human. Other species have not been tested.
<b>Form:</b>	Liquid. 50% glycerol
<b>Storage:</b>	Keep aliquots at -20C for higher stability or at 2-8C with an appropriate antibacterial agent. Avoid repetitive freeze/thaw cycles.
<b>Expiry Date:</b>	12 months after purchase



Western blot detection of GST tagged recombinant human Semaphorin 5A. Note the GST tag alone is 26 kDa.

FOR RESEARCH USE ONLY