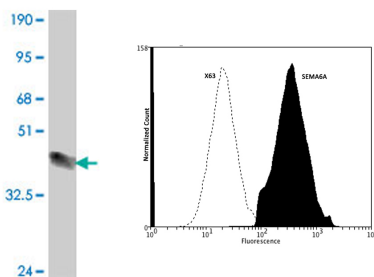


Mouse polyclonal antibody to human Semaphorin 6A: whole serum

Catalogue No.:	Mo-952-50
Description:	The transmembrane semaphorin Semaphorin 6A is expressed in developing neural tissue and is required for proper development of the thalamocortical neuron projection. Semaphorin 6A belongs to a subfamily characterized by an extracellular semaphorin domain, a transmembrane domain, and a long cytoplasmic tail. Members of this class can repel sympathetic and dorsal root ganglion axons in vitro, consistent with a traditional role as guidance signals. It was also suggested that Semaphorin 6A has a role in retrograde signaling.
Batch No.:	See product label
Unit size:	50 uL
Antigen:	Partial recombinant human Semaphorin 6A (21-120) with a GST tag.
Other Names:	Semaphorin VIA; Sema VIA; Semaphorin-6A-1; SEMA6A-1; SEMA6A; KIAA1368; SEMAQ
Accession:	SEM6A_HUMAN
Produced in:	Mouse
Purity:	Whole serum
Applications:	This antibody is recommended for WB, ELISA and Flow Cytometry. Use 1:100 fold dilution for Flow Cytometry. Biosensis recommends optimal dilutions/concentrations should be determined by the end user.
Specificity:	Specificity has been confirmed by WB and direct ELISA against the antigen.
Cross-reactivity:	Human. Other species have not been tested.
Form:	Liquid. 50% glycerol
Storage:	Keep aliquots at -20C for higher stability or at 2-8C with an appropriate antibacterial agent. Avoid repetitive freeze/thaw cycles.
Expiry Date:	12 months after purchase



Left: Western blot detection of GST tagged recombinant human Semaphorin 6A. Note the GST tag alone is 26 kDa. Right: Analysis of SEMA6A expression in human neuroblastoma SH-SY5Y cell line by Flow Cytometry. Cells were washed twice using PBS + 0.1% NaN₃, Blocking: 200 ug/mL Normal Sheep IgG (20 minutes), Primary antibody: Mouse Monoclonal antibody to SEMA6A (cat # Mo-952-100, 1:100 fold dilution for ~10⁶ cells) for 30 minutes at room temperature, Secondary antibody: Goat anti-mouse PE labeled secondary antibody (1:100 fold dilution) with incubation for 20 minutes in dark at room temperature. Non-specific Control IgG, clone X63 (cat # M-1249-100) was used as negative control under same conditions (black dashed). Flow cytometry data and results were generated using Orflo MoxiflowTM instrument and protocols.

FOR RESEARCH USE ONLY