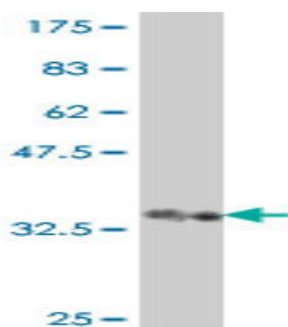


## Mouse polyclonal antibody to human Slit-2: whole serum

<b>Catalogue No.:</b>	Mo-940-50
<b>Description:</b>	Slit-2 is thought to act as molecular guidance cue in cellular migration, and its function appears to be mediated by interaction with roundabout homolog (ROBO) receptors. It is a secreted protein known for its role of repulsion in axon guidance and neuronal migration that can also inhibit leukocyte chemotaxis induced by chemotactic factors.
<b>Batch No.:</b>	See product label
<b>Unit size:</b>	50 $\mu$ L
<b>Antigen:</b>	Partial recombinant human Slit-2 (1361-1459) with a GST tag.
<b>Other Names:</b>	Slit homolog 2 protein; SLIT2; SLIL3
<b>Accession:</b>	SLIT2_HUMAN
<b>Produced in:</b>	Mouse
<b>Purity:</b>	Whole serum
<b>Applications:</b>	This antibody is recommended for WB and ELISA. Biosensis recommends optimal dilutions/concentrations should be determined by the end user.
<b>Specificity:</b>	Specificity has been confirmed by WB and direct ELISA against the antigen.
<b>Cross-reactivity:</b>	Human. Other species have not been tested.
<b>Form:</b>	Liquid. 50% glycerol
<b>Storage:</b>	Keep aliquots at -20C for higher stability or at 2-8C with an appropriate antibacterial agent. Avoid repetitive freeze/thaw cycles.
<b>Expiry Date:</b>	12 months after purchase



Western blot detection of GST tagged recombinant human Slit-2. Note the GST tag alone is 26 kDa.

FOR RESEARCH USE ONLY