

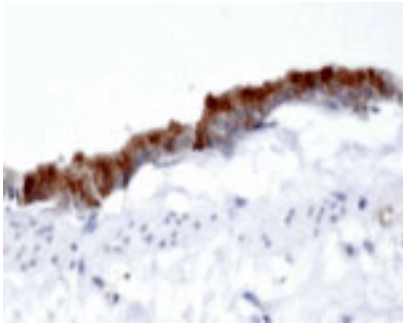
Rabbit antibody to AP-1 complex subunit gamma-1 (5-24): whole serum

Catalogue No.:	R-166-100
Description:	Adaptins are important components of clathrin-coated vesicles transporting ligand-receptor complexes from the plasma membrane or from the trans Golgi network to lysosomes. Together with medium and small subunits, adaptins form a heterotetrameric complex called an adaptor whose role is to promote the formation of clathrin-coated pits and vesicles and to recognise sorting signals within the cytosolic tails of transmembrane cargo molecules. Gamma-adaptin protein belongs to the adaptor protein complex 1 that plays a role in protein sorting in the late-Golgi/trans-Golgi network and/or endosomes. SUBCELLULAR LOCATION: Golgi apparatus. Cytoplasmic vesicle, clathrin-coated vesicle membrane.
Batch No.:	See product label
Unit size:	100 uL
Antigen:	A synthetic peptide (IRLRELIRTIRTARTQAEER) corresponding to the amino acids 5-24 of human AP-1 complex subunit gamma-1 conjugated to diphtheria toxin has been used as the immunogen. The peptide is homologous with the corresponding sequence derived from AP-1 complex subunit gamma-1 protein in mouse, rat, dog and zebra fish.
Sequence:	Human and rat sequences are identical.
Other Names:	AP-1 complex subunit gamma-1; Adapter-related protein complex 1 subunit gamma-1; Gamma1-adaptin; Adaptor protein complex AP-1 subunit gamma-1; Golgi adaptor HA1/AP1 adaptin subunit gamma-1; Clathrin assembly protein complex 1 gamma-1 large chain; AP1G1; ADTG; CLAPG1
Accession:	AP1G1_HUMAN
Produced in:	Rabbit
Purity:	Whole serum
Applications:	IHC, WB. This antibody works in immunohistochemistry on frozen or wax embedded tissue. Antigen retrieval has been used in testing but may not be necessary. Typical working dilution: Light microscopy 1/500 to 1/2000 depending on tissue and detection method; Immunofluorescence 1/50 to 1/200; Western blotting 1/1000 to 1/4000 is recommended depending on detection method. Biosensis recommends optimal dilutions/concentrations should be determined by the end user.
Specificity:	This antibody has been shown to be specific for AP-1
Cross-reactivity:	Rat and human
Form:	0.1ml filtered lyophilised serum containing 0.02% thimerosal.
Reconstitution:	Reconstitute in 100 uL of sterile water. Centrifuge to remove any insoluble material.
Storage:	After reconstitution keep aliquots at -20C for a higher stability, and at 2-8C with an appropriate antibacterial agent.
Expiry Date:	12 months after purchase
References:	

FOR RESEARCH USE ONLY

Rabbit antibody to AP-1 complex subunit gamma-1 (5-24): whole serum

1. Peyrard M, et al. Genomics 50:275-280(1998).
2. Takatsu H, et al. J. Biol. Chem. 273:24693-24700(1998).



Immunohistochemistry using DAB substrate showing intense staining in the rat airway epithelium using Rabbit antibody to AP-1 complex subunit gamma-1: whole serum (R-166-100) at a dilution of 1: 500. Secondary antibody was biotinylated goat and rabbit at a dilution of 1: 3000 followed by Vector ABC. This antigen has a similar distribution to clathrin, with which it associates.

biosensis

FOR RESEARCH USE ONLY