

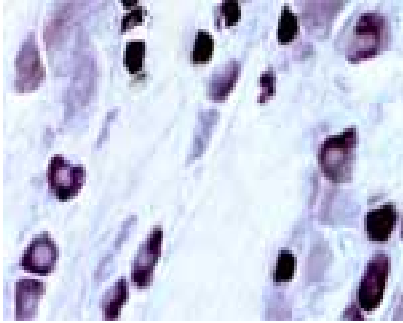
## Rabbit antibody to human capsaicin receptor (608-621): whole serum

<b>Catalogue No.:</b>	R-076-100
<b>Description:</b>	Responses evoked by low pH and heat, and capsaicin can be antagonized by capsazepine. SIMILARITY: Belongs to the transient receptor family. TrpV subfamily. SIMILARITY: Contains 3 ANK repeats.
<b>Batch No.:</b>	See product label
<b>Unit size:</b>	100 uL
<b>Antigen:</b>	A synthetic peptide (PSESTSHRWGPA) of human capsaicin receptor protein (aa: 608-621) conjugated to KLH has been used as the antigen.
<b>Other Names:</b>	Transient receptor potential cation channel subfamily V member 1; TrpV1; Capsaicin receptor; Osm-9-like TRP channel 1; OTRPC1; Vanilloid receptor 1; TRPV1; VR1; VR-1;
<b>Accession:</b>	capsaicin_HUMAN
<b>Produced in:</b>	Rabbit
<b>Purity:</b>	Whole serum
<b>Applications:</b>	IHC. Use at 1:1000 to 1:2000 dilution. This antibody has not been tested in other applications. Biosensis recommends optimal dilutions/concentrations should be determined by the end user.
<b>Specificity:</b>	Specificity was confirmed by IHC using frozen sections of rat dorsal root ganglia (DRG) and spinal cord. Due to sequence homology, similar staining is predicted in human DRG and spinal cord.
<b>Cross-reactivity:</b>	Human, rat. Other species have not yet been tested.
<b>Form:</b>	Lyophilised
<b>Reconstitution:</b>	Reconstitute in 100 uL of sterile water. Centrifuge to remove any insoluble material.
<b>Storage:</b>	After reconstitution keep aliquots at -20C for a higher stability, and at 2-8C with an appropriate antibacterial agent. Glycerol (1:1) may be added for an additional stability. Avoid repetitive freeze/thaw cycles.
<b>Expiry Date:</b>	12 months after purchase
<b>Specific References:</b>	1. Jabin Fagelskiöld A et al (2012) Insulin-secreting INS-1E cells express functional TRPV1 channels. Islets. 2012 Jan 1;4(1).
<b>References:</b>	1. Caterina et al. Nature 398: 436(1999). 2. Tominaga et al. Neuron. 21: 531-543(1998). 3. Nagy, I. et al. Eur J Pharmacol 500:351-369(2004).

---

FOR RESEARCH USE ONLY

## **Rabbit antibody to human capsaicin receptor (608-621): whole serum**



Detection of capsaicin receptor in small neurons in rat dorsal root ganglion (DRG) using rabbit antibody to human capsaicin receptor (608-621): whole serum, catalogue number R-076-100, at 1:2000 dilution. The rat tissue was prepared by perfusion fixation with 4% formaldehyde containing 10% saturated picric acid in buffered saline. Frozen sections (40  $\mu$ m) were used and the secondary antibody was conjugated with HRP. Rat spinal cord prepared in the same way also shows a high specific stain with little background.

biosensis

---

FOR RESEARCH USE ONLY

---