

## Rabbit antibody to MAP1LC3 B : whole serum

<b>Catalogue No.:</b>	R-155-100
<b>Description:</b>	MAP1LC3B is a subunit of neuronal microtubule-associated MAP1A and MAP1B proteins, which are involved in microtubule assembly and important for neurogenesis. MAP1LC3B is probably involved in formation of autophagosomal vacuoles (autophagosomes). SUBCELLULAR LOCATION: LC3-I: Cytoplasm. LC3-II: Intracytoplasmic membrane; lipid-anchor. Cytoplasmic vesicle; autophagosome; autophagosomal membrane; lipid-anchor. LC3-II binds to the autophagic membranes. TISSUE SPECIFICITY: Most abundant in heart, brain, skeletal muscle and testis. Little expression observed in liver. PTM: The precursor molecule is cleaved by APG4B/ATG4B to form LC3-I. This is activated by APG7L/ATG7, transferred to ATG3 and conjugated to phospholipid to form LC3-II. SIMILARITY: Belongs to the MAP1 LC3 family.
<b>Batch No.:</b>	See product label
<b>Unit size:</b>	100 uL
<b>Antigen:</b>	A synthetic peptide (FEQRVEDVRLIC) corresponding to the N-terminal of human MAP1LC3 B protein conjugated to Blue Carrier Protein has been used as the immunogen. The peptide is homologous with the corresponding sequence derived from mouse and rat MAP1LC3 B protein.
<b>Other Names:</b>	Microtubule-associated proteins 1A/1B light chain 3B; Microtubule-associated protein 1 light chain 3 beta; MAP1A/MAP1B LC3 B; MAP1A/1B light chain 3 B; MAP1 light chain 3-like protein 2; Autophagy-related protein LC3 B; Autophagy-related ubiquitin-like modifier LC3 B; APG8b; MAP-1LC3B; MAP1LC3B; MAP1ALC3;
<b>Accession:</b>	MLP3B_HUMAN MLP3B_MOUSE MLP3B_RAT
<b>Produced in:</b>	Rabbit
<b>Purity:</b>	Whole serum
<b>Applications:</b>	IHC, immunofluorescence, WB. A dilution of 1:100 to 1:1000 dilution is recommended for these applications. Biosensis recommends optimal dilutions/concentrations should be determined by the end user.
<b>Specificity:</b>	IHC, WB and ELISA confirmed the specificity for MAP1LC3 B.
<b>Cross-reactivity:</b>	Human, rat. Other species not yet tested.
<b>Form:</b>	Lyophilised
<b>Reconstitution:</b>	Reconstitute in 100 uL of sterile water. Centrifuge to remove any insoluble material.
<b>Storage:</b>	After reconstitution keep aliquots at -20C for a higher stability, and at 2-8C with an appropriate antibacterial agent. Glycerol (1:1) may be added for an additional stability. Avoid repetitive freeze/thaw cycles.
<b>Expiry Date:</b>	12 months after purchase
<b>Specific References:</b>	Theron AE et al. (2013) Molecular crosstalk between apoptosis and autophagy induced by a

---

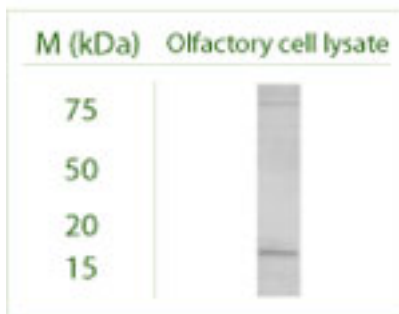
FOR RESEARCH USE ONLY

## Rabbit antibody to MAP1LC3 B : whole serum

novel 2-methoxyestradiol analogue in cervical adenocarcinoma cells.  
Cancer Cell Int. 2013 Aug 27;13(1):87.

Pilchowski R. et al. (2011) Specific Protein Patterns Characterize Metastatic Potential of Advanced Bladder Cancer.  
J Urol. 2011 Jun 16.

- General References:**
1. Difilippantonio S, et al. Eur. J. Cancer 39:1936-1947(2003).
  2. Yang Y.-S, et al. Endocr. Relat. Cancer 10:621-627(2003).
  3. He H, et al. J. Biol. Chem. 278:29278-29287(2003).
  4. Ota T, et al. Nat. Genet. 36:40-45(2004).
  5. Tanida I, et al. J. Biol. Chem. 279:36268-36276(2004).
  6. Tanida I, et al. J. Biol. Chem. 279:47704-47710(2004).
  7. Tanida I, et al. Int. J. Biochem. Cell Biol. 36:2503-2518(2004).



Western blot under reducing conditions on Olfactory cell line (Odora) lysate using Rabbit antibody to MAP1LC3 B : whole serum (R-155-100) at a dilution of 1:100.

---

FOR RESEARCH USE ONLY