

## Rabbit antibody to native DBH: whole serum

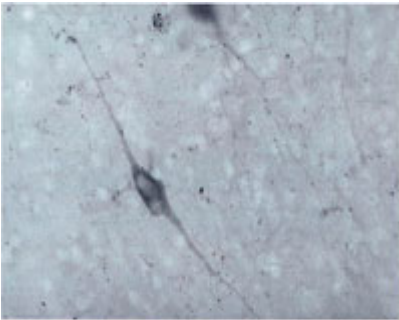
<b>Catalogue No.:</b>	R-108-100
<b>Description:</b>	DBH is an oxidoreductase belonging to the copper type II ascorbate-dependent monooxygenase family. DBH exists as a homotetramer composed of two non-covalently bound disulfide-linked dimers. It is present in the synaptic vesicles of postganglionic sympathetic neurons and converts dopamine to norepinephrine. It binds 2 copper ions and 1 PQQ per subunit. Depending on the presence of a signal peptide, DBH can exist in both soluble and membrane-bound forms.
<b>Batch No.:</b>	See product label
<b>Unit size:</b>	100 uL
<b>Antigen:</b>	Native enzyme prepared from Bovine adrenal glands. Purity was greater than 95% by PAGE.
<b>Other Names:</b>	Dopamine beta-hydroxylase; Dopamine beta-monoxygenase; Soluble dopamine beta-hydroxylase;
<b>Accession:</b>	P15101 DOPO_BOVIN;
<b>Produced in:</b>	Rabbit
<b>Purity:</b>	Whole serum
<b>Applications:</b>	IHC (frozen), Western Blot, radioimmunoassay and inhibition of enzymatic activity. Recommended to be used at a dilution of 1:500 to 1: 2000. Biosensis recommends optimal dilutions/concentrations should be determined by the end user.
<b>Specificity:</b>	This antiserum has been extensively characterised in several laboratories. It reacts with a single band on western blot of bovine adrenal homogenates and stains only cells known to contain DBH, such as sympathetic neurons, adrenal medullary cells and central adrenergic neurons. Staining is abolished by preincubation with the enzyme.
<b>Cross-reactivity:</b>	This antibody is known to react with bovine, human, guinea pig and rat DBH.
<b>Form:</b>	Lyophilised
<b>Reconstitution:</b>	Reconstitute in 100 uL of sterile water. Centrifuge to remove any insoluble material.
<b>Storage:</b>	Store lyophilized antibody at 2-8C. After reconstitution keep aliquots at -20C for a higher stability, and at 2-8C with an appropriate antibacterial agent. Avoid repetitive freeze/thaw cycles. Glycerol (1:1) may be added for an additional stability.
<b>Specific References:</b>	<p>Bowlaksono A. (2012) Molecular Regulation of Noradrenaline in Bovine Corpus Luteum. HAYATI Journal of Biosciences June 2012 Vol. 19 No. 2, p 81-87</p> <p>Blanco-Centurion C. et al (2004) Effects of hypocretin2-saporin and antidopamine-beta-hydroxylase-saporin neurotoxic lesions of the dorsolateral pons on sleep and muscle tone. Eur J Neurosci. 2004 May;19(10):2741-52.</p> <p>Ohshita N. et al (2004) Characteristics of the trigeminal depressor response in cats. J Neurosci Res. 2004 Jun 15;76(6):891-901.</p>
<b>References:</b>	1. Rush R. A. et al (1980) Gut Rev clin Lab Sci 12: 241

---

FOR RESEARCH USE ONLY

## Rabbit antibody to native DBH: whole serum

2. Verndell I. M. et al (1982) J Histochem Cytochem 30: 682



Immunohistochemical staining of Dopamine beta-Hydroxylase (DBH) in guinea pig brain stem using rabbit polyclonal to native bovine DBH, catalogue number R-108-100 .

biosensis

---

FOR RESEARCH USE ONLY

---