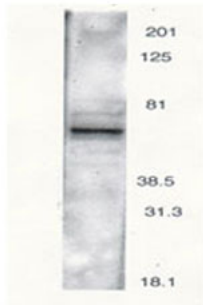


Rabbit antibody to PTH2 receptor (481-501): whole serum

Catalogue No.:	R-120-100
Description:	FUNCTION: This is a specific receptor for parathyroid hormone. The activity of this receptor is mediated by g proteins which activate adenylyl cyclase. PTHR2 may be responsible for PTH effects in a number of physiological systems. It may play a significant role in pancreatic function. PTHR2 presence in neurons indicates that it may function as a neurotransmitter receptor. SUBUNIT: Binds to TIPF39/TIP39. SUBCELLULAR LOCATION: Membrane; multi-pass membrane protein. TISSUE SPECIFICITY: Abundantly expressed in brain, arterial and cardiac endothelium. Found as well in sperm, in the head of the epididymis. Lower expression is found in vascular smooth muscle, exocrine pancreas, testis and placenta. SIMILARITY: Belongs to the G-protein coupled receptor 2 family.
Batch No.:	See product label
Unit size:	100 uL
Antigen:	A synthetic peptide (RQIDSHVTLPGYVWSSSEQDC) of rat Parathyroid hormone receptor protein (aa: 481-501) conjugated to KLH has been used as the immunogen.
Other Names:	Parathyroid hormone receptor; PTH2 receptor; Pthr2;
Accession:	PTHR2_RAT
Produced in:	Rabbit
Purity:	Whole serum
Applications:	WB. A dilution of 1:500 to 1:1000 is recommended. Biosensis recommends optimal dilutions/concentrations should be determined by the end user.
Specificity:	Specificity has been shown by western blot. A band of 63 kDa corresponding to the theoretical molecular weight of Parathyroid hormone receptor is easily detectable by WB. Absorption of the antiserum with the immunising peptide abolished the binding of the antibody to the target hence detectability of the band.
Cross-reactivity:	This antibody is known to react with rat Parathyroid hormone receptor.
Form:	Lyophilised
Reconstitution:	Reconstitute in 100 uL of sterile water. Centrifuge to remove any insoluble material.
Storage:	After reconstitution keep aliquots at -20C for a higher stability, and at 2-8C with an appropriate antibacterial agent. Glycerol (1:1) may be added for an additional stability. Avoid repetitive freeze/thaw cycles.
Expiry Date:	12 months after purchase
References:	Usdin, T. B. et al. (1999). Endocrinology. 140(7): 3363.

FOR RESEARCH USE ONLY

Rabbit antibody to PTH2 receptor (481-501): whole serum



Western blot analysis of rat brain using Rabbit antibody to PTH2 receptor (481-501): whole serum (catalogue no. R-120-100) isolated a major band of 63 kDa corresponding to the theoretical molecular weight of Parathyroid hormone receptor.

biosensis

FOR RESEARCH USE ONLY