

Rabbit antibody to rh BDNF: IgG

Catalogue No.:	R-017-500
Description:	BDNF belongs to the neurotrophin family and regulates the survival and differentiation of neurons during development. The alterations in BDNF expression induced by various kinds of brain insult including stress, ischemia, seizure activity and hypoglycemia, may contribute to some pathologies such as depression, epilepsy, Alzheimer's, and Parkinson's disease. Microglia release BDNF that may contribute to neuroinflammation and neuropathic pain. FUNCTION: Promotes the survival of neuronal populations that are all located either in the central nervous system or directly connected to it. Major regulator of synaptic transmission and plasticity at adult synapses in many regions of the CNS. The versatility of BDNF is emphasized by its contribution to a range of adaptive neuronal responses including long-term potentiation (LTP), long-term depression (LTD), certain forms of short-term synaptic plasticity, as well as homeostatic regulation of intrinsic neuronal excitability. SUBUNIT: Monomers and homodimers. Binds to NTRK2/TRKB. SUBCELLULAR LOCATION: Secreted protein. Post Translation Modification (PTM): The propeptide is N-glycosylated and glycosulfated. PTM: Converted into mature BDNF by plasmin (PLG) (By similarity). DISEASE: Defects in BDNF are a cause of congenital central hypoventilation syndrome (CCHS); also known as congenital failure of autonomic control or Ondine curse. CCHS is a rare disorder characterized by abnormal control of respiration in the absence of neuromuscular or lung disease, or an identifiable brain stem lesion. A deficiency in autonomic control of respiration results in inadequate or negligible ventilatory and arousal responses to hypercapnia and hypoxemia. CCHS is frequently complicated with neurocristopathies such as Hirschsprung disease that occurs in about 16% of CCHS cases. SIMILARITY: Belongs to the NGF-beta family.
Batch No.:	See product label
Unit size:	500 ug
Antigen:	Recombinant human BDNF
Other Names:	Brain-derived neurotrophic factor; Abrineurin; proBDNF;
Accession:	BDNF_HUMAN
Produced in:	Rabbit
Purity:	Protein G purified IgG
Applications:	IHC, ELISA (1 site), Western Blot, immunoblot, inhibition of biological activity in vitro/in vivo. Recommended to be used at an amount of 1-10 ug/mL for immunohistochemistry, Western blot or immunoblot, 0.1 ug/mL for ELISA and for inhibition of biological activity in vitro 1-10 ug/mL. Use neat for in vivo studies at 2-10 ug/mL (ED50). This antiserum stains cell bodies and some nerve terminals in the dorsal horn of the rat spinal cord, however, does not stain finest nerve terminals. Western blot: 1-10 ug/mL. Tissue homogenate is a recommended sample application for Western Blotting. The antibody detects 14 kDa (mature BDNF), 32 kDa (proBDNF) and a 18 kDa BDNF isoform, however numerous other non-characterized bands may also be present. In cell lysates, only 18 kDa and 32 kDa BDNF are detected. Alternative antibodies for Western Blotting are: R-1707-100 (cell lysates and tissue homogenates), R-083-100/R-066-500 (cell lysates, tissue homogenates and human serum); M-1744-50/100 (human serum and tissue

FOR RESEARCH USE ONLY

Rabbit antibody to rh BDNF: IgG

homogenates). Biosensis recommends optimal dilutions/concentrations should be determined by the end user.

- Specificity:** Less than 0.1% cross-reactivity against NGF, recombinant NT3 and NT4 by dot blot.
- Cross-reactivity:** This antiserum is known to react with BDNF from rat, mouse and human. Expected to react with BDNF of other species due to amino acid sequence homology.
- Form:** Lyophilised
- Reconstitution:** Reconstitute in 500 uL of sterile water. Centrifuge to remove any insoluble material.
- Storage:** Store lyophilized antibody at 2-8C. After reconstitution keep aliquots at -20C for a higher stability, and at 2-8C with an appropriate antibacterial agent. Glycerol (1:1) may be added for an additional stability. Avoid repetitive freeze/thaw cycles.
- Expiry Date:** 12 months after purchase
- Specific References:** Lin J.C-Y. and Rosenthal A. (2011) Methods for treating obesity by administering a trkB antagonist US Patent US 7935342 B2

Counts S.E. and Mufson E.J. (2010) Noradrenaline activation of neurotrophic pathways protects against neuronal amyloid toxicity J Neurochem. 2010 May;113(3):649-60.

Unsain N. et al (2009) Brain-derived neurotrophic factor facilitates TrkB down-regulation and neuronal injury after status epilepticus in the rat hippocampus J Neurochem. 2009 Oct;111(2):428-40

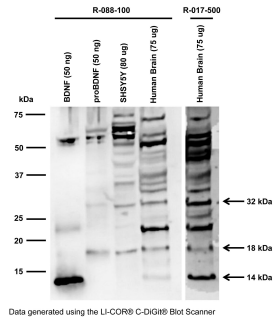
Salehi Z., Mashayekhi F. (2009) Brain-derived neurotrophic factor concentrations in the cerebrospinal fluid of patients with Parkinson's disease J Clin Neurosci. Jan;16(1):90-3.

- General References:**
1. A Acheson et al (1995) Nat. 74: 450-3
 2. Q Yan et al (1994) J. Neurosci. 14(9): 5281-91
 3. XF Zhou et al (1996) Neurosci. 74: 945-53
 4. XF Zhou, et al (1998) Exp. Neurol. 149: 237-42
 5. B Mellstrom et al (2004) Crit Rev Neurobiol 16, 43-9
 6. I Tapia-Arancibia et al (2004) Front Neuroendocrinol 25, 77-107
 7. S Pezet, et al (2002) Brain Res Brain Res Rev 40, 240-9
 8. Barde Y. A. et al (1989) EMBO J. 1: 549
 9. Conner J et al. (1997) J. Neurosci. 17: 2295
 10. JA Coull et al (2005) Nature. Dec 15;438(7070):1017-21.
 11. C Gomes et al (2013) J Neuroinflammation. Jan 30;10:16.

References: BDNF Antibodies for Western Blotting

FOR RESEARCH USE ONLY

Rabbit antibody to rh BDNF: IgG



Western blot analysis of BDNF expression in SH-SY5Y cell lysate (RIPA) and human brain. Polyclonal rabbit antibodies to rhBDNF R-088-100 (whole serum, 1:1000) and R-017-500 (IgG, 10 µg/mL) detect monomeric BDNF at 14 kDa in human brain (Tris-homogenate). ProBDNF is detected at the expected molecular weight of 32 kDa for glycosylated proBDNF monomer. A 18 kDa BDNF-isoform is shown that has previously been detected with other BDNF antibodies (Tongiorgi et al., 2012; Silhol et al., 2007). This 18 kDa band is also visible in the proBDNF protein sample, Lane 2.

Western Blotting Method: SDS-PAGE: denaturing and reducing, 12% Bis-Tris gel; Transfer: Tris-Glycine buffer, semi-dry transfer; Membrane: nitrocellulose (0.22 µm); Blocking: 5% skim milk in TBST, 1 hour at RT; Primary antibody: overnight at 4°C; Secondary antibody: anti-rabbit-HRP (1/6000), 2 hours at RT; Detection: Chemiluminescence.

FOR RESEARCH USE ONLY